

## **Summary Tables for FY 2012 Northeast Multispecies Fishery**

These summary tables were produced by NOAA Fisheries Service's Northeast Regional Office. The summary tables compare data for the full twelve months of the Northeast Multispecies fishing year (May-April) for fishing years 2009, 2010, 2011 and 2012. These tables, as well as additional data and analysis, will be presented in the 2012 Final Report on the Performance of the Northeast Multispecies (Groundfish) Fishery (May 2012 - April 2013), to be produced and released by NOAA's Northeast Fisheries Science Center's Social Science Branch in Fall 2013. The FY2011 Final Report may be viewed on the NEFSC's Social Sciences Branch homepage.

### **List of Tables**

Note throughout this report "Trips" refer to commercial trips in the Northeast Exclusive Economic Zone (EEZ). This is an adjustment from previous reports which included other trips, primarily party/charter trips, and as a result some prior year data have changed.

Unless otherwise indicated this report is based on active vessels, which are vessels that received revenue from any species on any trip while fishing under a limited access groundfish permit

Table 1. Summary of major trends – includes all vessels with a valid limited access multispecies permit.

Table 2 – Total landings and revenue from all trips

Table 3 – Total landings and nominal revenue from groundfish trips.

Table 4 – Nominal value of landings of all species by state and port of landing (all trips)

Table 5 – Nominal value of landings of all species by home state and home port (all trips)

Table 6 – Nominal value of landings of groundfish by state and port of landing (all trips)

Table 7 – Nominal value of landings of groundfish by home state and home port (all trips)

Table 8 – Nominal value and landed pounds of top ten non-groundfish species landed by limited access groundfish vessels

Table 9 – Number of vessels by fishing year

Tables 10 and 11 (formerly Table 31 and 32) - Numbers of vessels with revenue from any species (all trips) and from at least one groundfish trip, respectively.

Table 12 (formerly Table 10) – Effort by active vessels (by size category) . Shows the number of groundfish and non-groundfish trips, with days absent and average trip length.

Table 13 (formerly Table 11) – Average nominal revenue per vessel (by size category). Shows the average revenue from all species, average revenue from groundfish, and average revenue for all species on groundfish trips.

Table 14 (formerly Table 12) – Average nominal revenue per trip and days absent (by size category). Shows average revenue per groundfish trip and per non-groundfish trip, average revenue per day on groundfish trips, and average revenue per day on a non-groundfish trips.

Tables 18 and 19 (formerly Tables 35 and 36) - Distributions of nominal revenue from all species and from groundfish respectively, (all trips) among vessels

Tables 22 and 23 (formerly Tables 39 and 40) - Numbers of vessels with revenue from all species and groundfish respectively, (on all trips) by cumulative quartiles (ordered high revenue to low).

Table 26 (formerly Table 43) – Changes in employment indicators by vessel size category (all trips).

Table 27 (formerly Table 44) – Changes in employment by home state (all trips). Shows total number of crew positions, crew trips, crew days, and crew day/crew trip.

**Additional Tables that will not be in the NEFSC Final Report**

Table A - Common Pool Groundfish Landings by Month

Table B - Sector Groundfish Landings by Month

Table C - Eastern Georges Bank Cod/Haddock Landings by Month

### **List of Figures**

Figure 8. Allocated groundfish nominal revenue by species (all trips).

Figure 9. Yearly average nominal price by allocated groundfish species

Figure 9. Yearly nominal average price of combined allocated groundfish vs. other species, including non-allocated groundfish species.

Figure 15. Number of vessels with revenue from any species by vessel size category (all trips).

Figure 16. Number of vessels with revenue from any species on at least one groundfish trip by vessel size category.

**Table 1. Summary of major trends (May through April, all vessels with a valid limited access multispecies permit)**

2009		2010			2011			2012		
Total		Total	Sector Vessels	Common Pool	Total	Sector Vessels	Common Pool	Total	Sector Vessels	Common Pool
<b>Groundfish Gross Nominal Revenue</b>	\$82,510,132	\$83,177,330	\$81,123,145	\$2,054,184	\$90,453,455	\$89,603,929	\$849,526	\$69,778,174	\$69,135,759	\$642,414
<b>Non-groundfish Gross Nominal Revenue</b>	\$180,396,477	\$210,631,484	\$115,682,739	\$94,948,745	\$240,364,488	\$144,718,459	\$95,646,029	\$235,730,686	\$140,108,099	\$95,622,587
<b>Total Gross Nominal Revenue</b>	\$262,906,608	\$293,808,814	\$196,805,885	\$97,002,930	\$330,817,943	\$234,322,388	\$96,495,555	\$305,508,860	\$209,243,859	\$96,265,001
<b>Groundfish average price</b>	\$1.21/lb	\$1.43/lb	\$1.43/lb	\$1.58/lb	\$1.47/lb	\$1.47/lb	\$1.64/lb	\$1.51/lb	\$1.51/lb	\$1.79/lb
<b>Non-groundfish average price</b>	\$0.97/lb	\$1.21/lb	\$1.19/lb	\$1.24/lb	\$1.14/lb	\$1.13/lb	\$1.16/lb	\$1.11/lb	\$1.07/lb	\$1.17/lb
<b>Number of active vessels*</b>	916	854	435	419	776	442	337	764	446	320
<b>Number of groundfish trips</b>	25,897	13,474	11,190	2,284	15,958	13,679	2,279	14,496	12,943	1,553
<b>Number of non-groundfish trips**</b>	37,173	38,489	16,527	21,962	33,675	16,795	16,880	32,523	17,090	15,433
<b>Number of days absent on groundfish trips</b>	23,662	17,614	16,056	1,558	20,823	19,334	1,488	19,557	18,581	976
<b>Number of days absent on non-groundfish trips**</b>	30,084	30,291	15,329	14,962	26,932	14,796	12,136	27,474	15,317	12,157
<b>Total Crew Positions</b>	2,159	2,099			2,083			2,025		
<b>Total Crew-trips</b>	135,222	117,854			118,851			120,949		
<b>Total Crew-days</b>	164,935	156,584			160,209			185,006		

Landings in landed weight (lb); Allocated groundfish revenue include estimate of missing dealer reports; dealer and vessel-reported revenue for other species, including non-allocated groundfish species.

\* Note sector plus common pool vessel counts may exceed the total vessel count because vessels may switch between sector and common pool eligibilites during the fishing year.

\*\*Throughout this report "trips" refer to commercial trips in the northeast Exclusive Economic Zone (EEZ). Past reports included party/charter trips.

This table will be part of the more comprehensive 2012 final report on the groundfish fishery by the Northeast Fisheries Science Center expected Fall 2013.

Source: NMFS Northeast Regional Office

Run Date: June, 2013

These data are the best available to NOAA's National Marine Fisheries Service (NMFS). Data sources for this report include: (1) Vessels via VMS; (2) Vessels via vessel logbook reports; (3) Dealers via Dealer Electronic reporting. Differences with previous reports are due to corrections made to the database.

9/11/2013

**Table 2. Total landings and revenue from trips by fishing year (May through April)**

2009		2010			2011			2012		
Landed Pounds		Total	Sector Vessels	Common Pool	Total	Sector Vessels	Common Pool	Total	Sector Vessels	Common Pool
Groundfish	68,416,222	58,178,065	56,881,936	1,296,129	61,661,450	61,142,619	518,831	46,295,753	45,937,339	358,414
Non-Groundfish	185,631,323	174,269,060	97,533,326	76,735,734	211,226,012	128,612,819	82,613,193	211,983,492	130,550,968	81,432,524
Total Pounds	254,047,546	232,447,125	154,415,262	78,031,863	272,887,462	189,755,438	83,132,024	258,279,245	176,488,307	81,790,938
Gross Revenue										
Groundfish	\$82,510,132	\$83,177,330	\$81,123,145	\$2,054,184	\$90,453,455	\$89,603,929	\$849,526	\$69,778,174	\$69,135,759	\$642,414
(in 2010 dollars*)	(\$83,035,134)	(\$82,577,524)	(\$80,529,936)	(\$2,047,588)	(\$88,202,983)	(\$87,373,204)	(\$829,779)	(\$68,156,894)	(\$67,529,584)	(\$627,310)
Non-Groundfish	\$180,396,477	\$210,631,484	\$115,682,739	\$94,948,745	\$240,364,488	\$144,718,459	\$95,646,029	\$235,730,686	\$140,108,099	\$95,622,587
(in 2010 dollars*)	(\$181,709,647)	(\$209,397,902)	(\$114,958,770)	(\$94,439,133)	(\$234,555,240)	(\$141,177,349)	(\$93,377,891)	(\$229,710,048)	(\$136,528,754)	(\$93,181,293)
Total Revenue	\$262,906,608	\$293,808,814	\$196,805,885	\$97,002,930	\$330,817,943	\$234,322,388	\$96,495,555	\$305,508,860	\$209,243,859	\$96,265,001
(in 2010 dollars*)	(\$264,744,781)	(\$291,975,426)	(\$195,488,705)	(\$96,486,721)	(\$322,758,223)	(\$228,550,553)	(\$94,207,670)	(\$297,866,942)	(\$204,058,339)	(\$93,808,603)

\* Deflated by the calendar year 2010 GDP Implicit Price Deflator

**Table 3. Total landings and nominal revenue from groundfish trips by fishing year (May through April)**

2009		2010			2011			2012		
Landed Pounds		Total	Sector Vessels	Common Pool	Total	Sector Vessels	Common Pool	Total	Sector Vessels	Common Pool
Groundfish	68,362,567	58,067,026	56,778,352	1,288,674	61,520,629	61,048,985	471,644	46,238,230	45,899,510	338,720
Non-Groundfish	30,965,367	23,147,600	18,378,785	4,768,815	28,781,804	23,762,474	5,019,330	27,527,755	23,975,065	3,552,690
Total Pounds	99,327,934	81,214,627	75,157,138	6,057,489	90,302,433	84,811,459	5,490,974	73,765,985	69,874,575	3,891,410
Gross Revenue										
Groundfish	\$82,456,833	\$82,964,771	\$80,920,971	\$2,043,800	\$90,237,532	\$89,451,574	\$785,958	\$69,669,582	\$69,054,416	\$615,166
Non-Groundfish	\$25,862,188	\$22,339,660	\$18,243,467	\$4,096,194	\$31,826,744	\$26,341,955	\$5,484,788	\$25,768,848	\$22,052,177	\$3,716,671
Total Revenue	\$108,319,021	\$105,304,431	\$99,164,438	\$6,139,993	\$122,064,276	\$115,793,530	\$6,270,747	\$95,438,430	\$91,106,594	\$4,331,836

Landings in landed weight (lb); Allocated groundfish revenue include estimate of missing dealer reports; dealer and vessel-reported revenue for other species, including non-allocated groundfish species.

Note tables include allocated and non-allocated groundfish revenue.

This table will be part of the more comprehensive 2012 final report on the groundfish fishery by the Northeast Fisheries Science Center expected Fall 2013.

Source: NMFS Northeast Regional Office

Run Date: June, 2013

These data are the best available to NOAA's National Marine Fisheries Service (NMFS). Data sources for this report include: (1) Vessels via VMS; (2) Vessels via vessel logbook reports; (3) Dealers via Dealer Electronic reporting. Differences with previous reports are due to corrections made to the database.

**Table 4. Nominal value of landings of all species by state and port of landing  
(May through April, all trips)**

		Year			
		2009	2010	2011	2012
<b>CT</b>		\$3,876,483	\$4,266,665	\$6,282,536	\$8,658,251
<b>MA</b>		\$159,198,374	\$174,170,552	\$193,090,182	\$177,269,456
	BOSTON	\$10,577,434	\$14,208,752	\$15,105,220	\$13,727,435
	CHATHAM	\$7,874,349	\$7,432,578	\$9,261,558	\$7,403,171
	GLOUCESTER	\$39,363,574	\$39,738,431	\$42,792,393	\$32,171,692
	NEW BEDFORD	\$84,328,951	\$95,738,111	\$108,908,183	\$104,719,496
<b>ME</b>		\$16,969,818	\$18,676,179	\$19,099,629	\$19,845,102
	PORTLAND	\$6,994,544	\$6,333,857	\$7,608,289	\$8,441,214
<b>NH</b>		\$7,245,715	\$6,926,691	\$7,297,566	\$6,403,783
<b>NJ</b>		\$19,024,850	\$24,262,761	\$28,516,893	\$25,482,504
<b>NY</b>		\$18,303,108	\$21,329,860	\$24,546,112	\$20,446,772
<b>RI</b>		\$26,948,520	\$30,214,760	\$37,015,172	\$33,717,704
	POINT JUDITH	\$19,270,491	\$22,037,568	\$28,310,890	\$24,829,830
<b>Other Northeast</b>		\$11,339,742	\$13,961,346	\$14,969,852	\$13,685,288
<b>Grand Total</b>		\$262,906,608	\$293,808,814	\$330,817,943	\$305,508,860

**Table 5. Nominal value of landings of all species by home port state and home port  
(May through April, all trips)**

		Year			
		2009	2010	2011	2012
<b>CT</b>		\$3,823,487	\$5,524,100	\$5,156,483	\$8,532,052
<b>MA</b>		\$140,139,086	\$149,384,563	\$168,619,962	\$151,911,932
	BOSTON	\$26,424,512	\$27,717,001	\$31,669,685	\$27,595,366
	CHATHAM	\$6,347,821	\$6,469,012	\$8,993,091	\$6,811,320
	GLOUCESTER	\$23,519,351	\$24,968,230	\$26,414,870	\$22,588,810
	NEW BEDFORD	\$58,467,580	\$64,952,370	\$77,437,591	\$70,662,174
<b>ME</b>		\$26,250,187	\$31,169,768	\$29,637,709	\$27,838,421
	PORTLAND	\$10,533,770	\$12,936,008	\$12,832,447	\$11,720,115
<b>NH</b>		\$8,611,098	\$7,660,492	\$9,140,737	\$7,892,358
<b>NJ</b>		\$17,281,627	\$20,271,053	\$24,434,492	\$24,460,607
<b>NY</b>		\$22,735,132	\$27,332,472	\$32,189,248	\$28,026,676
<b>RI</b>		\$29,510,156	\$35,162,487	\$41,685,841	\$37,174,232
	POINT JUDITH	\$19,387,495	\$22,873,562	\$28,541,804	\$25,729,479
<b>Other Northeast</b>		\$14,555,836	\$17,303,879	\$19,953,471	\$19,672,581
<b>Grand Total</b>		\$262,906,608	\$293,808,814	\$330,817,943	\$305,508,860

Allocated groundfish revenue include estimate of missing dealer reports; dealer and vessel-reported revenue for other species, including non-allocated groundfish species.

This table will be part of the more comprehensive 2012 final report on the groundfish fishery by the Northeast Fisheries Science Center expected Fall 2013.

Source: NMFS Northeast Regional Office  
Run Date: June, 2013

These data are the best available to NOAA's National Marine Fisheries Service (NMFS). Data sources for this report include: (1) Vessels via VMS; (2) Vessels via vessel logbook reports; (3) Dealers via Dealer Electronic reporting. Differences with previous reports are due to corrections made to the database.

**Table 6. Nominal value of landings of groundfish by state and port of landing  
(May through April, all trips)**

		Year			
		2009	2010	2011	2012
<b>CT</b>		\$41,749	\$13,322	\$46,180	\$86,809
<b>MA</b>		\$70,477,201	\$73,618,437	\$77,997,852	\$57,581,433
	BOSTON	\$8,467,722	\$11,747,523	\$12,408,924	\$11,648,886
	CHATHAM	\$3,148,231	\$2,164,906	\$2,408,750	\$998,562
	GLOUCESTER	\$29,970,256	\$27,712,592	\$29,781,901	\$21,098,897
	NEW BEDFORD	\$24,009,818	\$29,350,115	\$30,212,657	\$21,704,387
<b>ME</b>		\$5,557,319	\$4,360,791	\$5,987,244	\$6,733,627
	PORTLAND	\$4,556,200	\$3,464,647	\$4,867,700	\$5,744,995
<b>NH</b>		\$4,157,091	\$3,269,457	\$4,312,427	\$3,258,427
<b>NJ</b>		\$31,677	\$24,789	\$21,616	\$32,777
<b>NY</b>		\$303,333	\$252,644	\$78,878	\$213,770
<b>RI</b>		\$1,938,459	\$1,635,316	\$2,008,929	\$1,867,391
	POINT JUDITH	\$1,804,894	\$1,532,894	\$1,938,575	\$1,750,923
<b>Other Northeast</b>		\$3,302	\$2,575	\$330	\$3,940
<b>Grand Total</b>		\$82,510,132	\$83,177,330	\$90,453,455	\$69,778,174

**Table 7. Nominal value of landings of groundfish by home port state and home port (May through April, all trips)**

		Year			
		2009	2010	2011	2012
<b>CT</b>		\$125,910	\$55,713	\$47,432	\$15,039
<b>MA</b>		\$58,804,982	\$59,304,500	\$65,839,086	\$49,311,981
	BOSTON	\$13,706,766	\$14,478,775	\$17,515,777	\$13,210,769
	CHATHAM	\$2,733,282	\$2,370,433	\$2,572,766	\$942,609
	GLOUCESTER	\$16,756,478	\$16,796,745	\$17,041,066	\$14,273,175
	NEW BEDFORD	\$15,776,027	\$18,238,320	\$20,633,050	\$15,614,574
<b>ME</b>		\$13,589,256	\$14,919,082	\$15,137,260	\$13,631,908
	PORTLAND	\$8,403,921	\$10,631,179	\$10,176,772	\$8,841,043
<b>NH</b>		\$5,093,512	\$3,699,058	\$4,648,451	\$3,392,628
<b>NJ</b>		\$412,272	\$309,178	\$122,822	\$55,365
<b>NY</b>		\$754,517	\$1,099,266	\$1,398,333	\$727,240
<b>RI</b>		\$3,027,940	\$3,246,200	\$2,893,937	\$2,517,265
	POINT JUDITH	\$2,238,699	\$2,402,951	\$2,030,127	\$1,864,807
<b>Other Northeast</b>		\$701,742	\$544,332	\$366,134	\$126,746
<b>Grand Total</b>		\$82,510,132	\$83,177,330	\$90,453,455	\$69,778,174

Allocated groundfish revenue include estimate of missing dealer reports; dealer and vessel-reported revenue for other species, including non-allocated groundfish species.

This table will be part of the more comprehensive 2012 final report on the groundfish fishery by the Northeast Fisheries Science Center expected Fall 2013.

Source: NMFS Northeast Regional Office  
Run Date: June, 2013

These data are the best available to NOAA's National Marine Fisheries Service (NMFS). Data sources for this report include: (1) Vessels via VMS; (2) Vessels via vessel logbook reports; (3) Dealers via Dealer Electronic reporting. Differences with previous reports are due to corrections made to the database.

**Table 8. Nominal value and landed pounds of top ten non-groundfish species\* landed by limited access groundfish vessels (May through April)**

	2009	2010			2011			2012		
		Total	Sector Vessels	Common Pool	Total	Sector Vessels	Common Pool	Total	Sector Vessels	Common Pool
<b>HERRING, ATLANTIC</b>	\$3,412,894	\$2,866,986	\$1,331,847	\$1,535,140	\$6,468,603	\$3,033,997	\$3,434,606	\$7,257,862	\$3,107,202	\$4,150,660
<b>(CLUPEA HARENGUS)</b>	33,810,058	23,380,003	10,093,137	13,286,866	55,337,082	22,405,670	32,931,412	55,142,543	22,365,684	32,776,859
<b>SKATES(RACK)</b>	\$6,923,114	\$4,996,044	\$3,679,045	\$1,316,999	\$6,700,223	\$4,970,948	\$1,729,275	\$5,276,598	\$3,838,989	\$1,437,609
<b>(RAJIDAE)</b>	24,019,955	17,059,045	11,590,651	5,468,394	20,249,347	14,500,345	5,749,002	18,164,533	13,302,556	4,861,977
<b>MENHADEN</b>	\$734,164	\$1,316,779	\$192,752	\$1,124,027	\$1,978,133	\$1,244,047	\$734,086	\$1,999,103	\$1,131,566	\$867,538
<b>(BREVOORTIA TYRANNUS)</b>	10,485,239	18,468,274	1,983,817	16,484,457	22,198,691	14,752,219	7,446,472	23,717,716	15,299,191	8,418,525
<b>SQUID (LOLIGO)</b>	\$14,811,640	\$18,008,358	\$15,764,628	\$2,243,730	\$20,021,817	\$15,310,072	\$4,711,745	\$23,130,245	\$18,334,264	\$4,795,981
<b>(LOLIGO PEALEI)</b>	15,566,879	16,415,884	14,445,220	1,970,664	15,527,094	12,030,217	3,496,877	21,022,119	16,583,040	4,439,080
<b>HAKE, SILVER</b>	\$8,466,465	\$11,146,497	\$8,547,984	\$2,598,513	\$10,875,399	\$8,202,794	\$2,672,605	\$9,611,239	\$7,364,544	\$2,246,696
<b>(MERLUCCius BILINEARIS)</b>	17,092,258	17,420,218	13,685,635	3,734,582	16,358,165	12,994,360	3,363,805	14,432,688	11,414,816	3,017,872
<b>DOGFISH SPINY</b>	\$1,889,011	\$1,608,960	\$1,196,123	\$412,837	\$1,991,215	\$1,586,341	\$404,873	\$2,706,741	\$2,266,629	\$440,112
<b>(SQUALUS ACANTHIAS)</b>	8,058,136	7,394,636	5,393,593	2,001,043	8,956,433	7,282,524	1,673,910	12,581,652	10,529,159	2,052,493
<b>SCALLOP, SEA</b>	\$60,847,600	\$72,225,000	\$34,118,280	\$38,106,720	\$89,485,717	\$47,773,625	\$41,712,093	\$90,007,426	\$49,716,026	\$40,291,401
<b>(PATINOPECTEN, PLACOPECTEN SP)</b>	9,489,648	8,385,065	4,004,480	4,380,585	8,930,730	4,761,977	4,168,753	8,933,823	4,969,504	3,964,320
<b>SCUP</b>	\$3,756,327	\$4,731,736	\$3,296,701	\$1,435,035	\$6,846,405	\$5,309,090	\$1,537,315	\$6,300,781	\$4,779,004	\$1,521,777
<b>(STENOTOMUS CHRYSOPS)</b>	6,150,777	7,882,060	5,302,572	2,579,488	10,366,649	8,087,078	2,279,571	11,220,083	8,889,998	2,330,085
<b>LOBSTER</b>	\$28,668,850	\$33,854,142	\$13,430,381	\$20,423,761	\$29,495,691	\$16,315,596	\$13,180,095	\$31,473,421	\$15,115,197	\$16,358,224
<b>(HOMARUS AMERICANUS)</b>	8,208,689	8,717,723	3,583,471	5,134,253	7,494,936	4,282,790	3,212,146	8,596,170	4,548,258	4,047,912
<b>SQUID (ILLEX)</b>	\$1,482,979	\$1,639,236	\$1,381,614	\$257,622	\$4,186,998	\$3,548,917	\$638,082	\$1,415,164	\$1,332,298	\$82,867
<b>(ILLEX ILLECEBROSUS)</b>	9,006,472	6,324,303	5,160,472	1,163,831	11,098,547	8,928,640	2,169,907	5,070,033	4,715,771	354,262

\* Sorted descending by landings over four years.

Landings in landed weight (lb); Allocated groundfish revenue include estimate of missing dealer reports; dealer and vessel-reported revenue for other species, including non-allocated groundfish species.

This table will be part of the more comprehensive 2012 final report on the groundfish fishery by the Northeast Fisheries Science Center expected Fall 2013.

Source: NMFS Northeast Regional Office

Run Date: June, 2013

These data are the best available to NOAA's National Marine Fisheries Service (NMFS). Data sources for this report include: (1) Vessels via VMS; (2) Vessels via vessel logbook reports; (3) Dealers via Dealer Electronic reporting. Differences with previous reports are due to corrections made to the database.

**Table 9. Number of vessels by fishing year (May through April)**

	2009	2010			2011			2012		
	Total	Total	Sector Vessels	Common Pool	Total	Sector Vessels	Common Pool	Total	Sector Vessels	Common Pool
<b>As of May 1 each Fishing Year:</b>										
<b>Total groundfish limited access eligibilities</b>	<b>1464</b>	<b>1441</b>	<b>762</b>	<b>679</b>	<b>1422</b>	<b>828</b>	<b>594</b>	<b>1408</b>	<b>850</b>	<b>558</b>
<b>Eligibilities held as Confirmation of Permit History</b>	<b>81</b>	<b>94</b>	<b>22</b>	<b>72</b>	<b>168</b>	<b>88</b>	<b>80</b>	<b>228</b>	<b>145</b>	<b>83</b>
<b>During any part of the fishing year*:</b>										
<b>Total eligible vessels</b>	1,459	1,409	765	650	1,321	781	547	1,223	728	501
<b>Eligible vessels that did not renew a limited access groundfish permit</b>	28	26	12	14	42	9	33	46	8	38
<b>Vessels with a limited access groundfish permit</b>	1,431	1,383	753	636	1,279	772	514	1,177	720	463
<b>While under a limited access groundfish permit:</b>										
<b>... those with revenue from any species**</b>	916	854	435	419	776	442	337	764	446	320
<b>... those with revenue from at least one groundfish trip</b>	566	445	303	142	419	301	120	401	303	99
<b>... those with no landings</b>	515 (36%)	529 (38%)	318 (42%)	217 (34%)	503 (39%)	330 (43%)	177 (34%)	413 (35%)	274 (38%)	143 (31%)

\* On May 1st of the fishing year the number of vessels will equal to the number of eligibilities not in Confirmation of Permit History (CPH). Over time the number of vessels will differ from the number of eligibilites because these eligibilities can be transferred from vessel to vessel during the fishing year.

Note sector plus common pool vessel counts may exceed the total vessel count because vessels may switch between sector and common pool eligibilites during the fishing year.

These numbers exclude groundfish limited access eligibilities held as Confirmation of Permit History (CPH). Starting in 2010, Amendment 16 authorized CPH owners to join Sectors and to lease DAS. For purposes of comparison, CPH vessels are not included in the data for either Sector or Common Pool.

\*\*Active vessels in this report received revenue from any species while fishing under a limited access groundfish permit

This table will be part of the more comprehensive 2012 final report on the groundfish fishery by the Northeast Fisheries Science Center expected Fall 2013.

Source: NMFS Northeast Regional Office

Run Date: June, 2013

These data are the best available to NOAA's National Marine Fisheries Service (NMFS). Data sources for this report include: (1) Vessels via VMS; (2) Vessels via vessel logbook reports; (3) Dealers via Dealer Electronic reporting. Differences with previous reports are due to corrections made to the database.

**Table 10. (formerly Table 31) Number of vessels with revenue from any species (all trips).**

Home Port State/City	2009	Fishing Year								
		2010			2011			2012		
		Total*	Sector Vessels	Common Pool	Total*	Sector Vessels	Common Pool	Total*	Sector Vessels	Common Pool
<b>CT</b>	12	11	4	7	11	4	7	10	5	5
<b>MA</b>	459	423	261	162	378	259	119	375	252	123
BOSTON	62	52	41	11	49	41	8	47	37	10
CHATHAM	42	43	31	12	39	28	11	38	29	9
GLOUCESTER	110	105	69	36	91	65	26	92	66	26
NEW BEDFORD	86	69	48	21	70	53	17	69	51	18
<b>ME</b>	112	102	63	39	88	70	19	95	76	19
PORTLAND	17	17	15	2	16	15	1	18	16	2
<b>NH</b>	53	50	35	15	46	33	13	41	29	12
<b>NJ</b>	61	56	2	54	49	5	44	47	10	37
<b>NY</b>	95	93	15	78	91	16	75	88	19	69
<b>RI</b>	93	86	43	43	83	44	39	77	42	35
POINT JUDITH	48	45	33	12	44	34	10	44	35	9
<b>OTHER NORTHEAST</b>	34	36	13	23	34	13	21	37	15	22
<b>Grand Total**</b>	916	854	435	419	776	442	337	764	446	320

\* Note sector vessel plus common pool vessel counts may exceed the total vessel count because vessels may switch between sector and common pool eligibilites during the fishing year.

\*\* Note state vessel counts may exceed the grand total vessel count because vessels may change home port during the fishing year.

This table will be part of the more comprehensive 2012 final report on the groundfish fishery by the Northeast Fisheries Science Center expected Fall 2013.

Source: NMFS Northeast Regional Office

Run Date: June, 2013

These data are the best available to NOAA's National Marine Fisheries Service (NMFS). Data sources for this report include: (1) Vessels via VMS; (2) Vessels via vessel logbook reports; (3) Dealers via Dealer Electronic reporting. Differences with previous reports are due to corrections made to the database.

9/11/2013

**Table 11. (formerly Table 32) Number of vessels with revenue from at least one groundfish trip.**

Home Port State/City	2009	Fishing Year								
		2010			2011			2012		
		Total*	Sector Vessels	Common Pool	Total*	Sector Vessels	Common Pool	Total*	Sector Vessels	Common Pool
<b>CT</b>	8	7	3	4	5	2	3	5	3	2
<b>MA</b>	310	238	189	49	224	186	38	207	179	28
BOSTON	46	35	33	2	34	34	0	28	28	0
CHATHAM	28	26	23	3	26	23	3	23	21	2
GLOUCESTER	97	74	59	15	70	55	15	61	54	7
NEW BEDFORD	51	33	29	4	37	32	5	36	32	4
<b>ME</b>	64	43	38	5	47	43	4	51	48	3
PORTLAND	15	15	14	1	15	15	0	16	16	0
<b>NH</b>	40	32	26	6	29	23	6	25	20	5
<b>NJ</b>	26	21	1	20	17	1	16	11	2	9
<b>NY</b>	47	40	8	32	42	9	33	43	12	31
<b>RI</b>	61	55	34	21	49	32	17	54	37	17
POINT JUDITH	33	31	28	3	28	27	1	33	31	2
<b>OTHER NORTHEAST</b>	12	10	5	5	8	5	3	6	2	4
<b>Grand Total</b>	566	445	303	142	419	301	120	401	303	99

\* Note sector vessel plus common pool vessel counts may exceed the total vessel count because vessels may switch between sector and common pool eligibilites during the fishing year.

\*\* Note state vessel counts may exceed the grand total vessel count because vessels may change home port during the fishing year.

This table will be part of the more comprehensive 2012 final report on the groundfish fishery by the Northeast Fisheries Science Center expected Fall 2013.

Source: NMFS Northeast Regional Office

Run Date: June, 2013

These data are the best available to NOAA's National Marine Fisheries Service (NMFS). Data sources for this report include: (1) Vessels via VMS; (2) Vessels via vessel logbook reports; (3) Dealers via Dealer Electronic reporting. Differences with previous reports are due to corrections made to the database.

9/11/2013

**Table 12. (formerly Table 10) Effort by active vessels (May through April)**

	2009	2010			2011			2012		
	Total	Total	Sector Vessels	Common Pool	Total	Sector Vessels	Common Pool	Total	Sector Vessels	Common Pool
<b>Less than 30'</b>										
Number of Groundfish Trips	435	136	2	134	275	15	260	192	6	186
Number of non-groundfish Trips	1,556	1,465	315	1,150	1,161	199	962	1,093	192	901
Number of days absent on groundfish trips	160	61	1	60	103	7	97	77	3	75
Number of days absent on non-groundfish trips	506	470	107	362	376	68	308	314	53	261
Average trip length on groundfish trips (standard deviation)	0.37 (0.18)	0.45 (0.13)	0.40 (0.09)	0.45 (0.13)	0.38 (0.12)	0.45 (0.04)	0.37 (0.13)	0.41 (0.16)	0.47 (0.06)	0.41 (0.16)
Average trip length on non-groundfish trips (standard deviation)	0.35 (0.21)	0.33 (0.14)	0.35 (0.09)	0.33 (0.15)	0.33 (0.11)	0.35 (0.10)	0.32 (0.11)	0.32 (0.11)	0.34 (0.10)	0.31 (0.11)
<b>30' to &lt;50'</b>										
Number of Groundfish Trips	19,193	9,263	7,531	1,732	11,122	9,418	1,704	9,751	8,603	1,148
Number of non-groundfish Trips	21,781	23,504	9,451	14,053	20,364	10,348	10,016	20,227	10,899	9,328
Number of days absent on groundfish trips	8,331	5,069	3,961	1,107	6,340	5,229	1,112	5,740	5,014	727
Number of days absent on non-groundfish trips	8,141	8,927	3,549	5,378	7,859	3,656	4,203	7,998	4,084	3,914
Average trip length on groundfish trips (standard deviation)	0.44 (0.54)	0.55 (0.65)	0.53 (0.64)	0.64 (0.71)	0.57 (0.71)	0.56 (0.72)	0.66 (0.68)	0.59 (0.74)	0.58 (0.75)	0.63 (0.65)
Average trip length on non-groundfish trips (standard deviation)	0.42 (0.48)	0.41 (0.36)	0.40 (0.36)	0.42 (0.36)	0.41 (0.34)	0.38 (0.29)	0.43 (0.37)	0.42 (0.33)	0.39 (0.28)	0.44 (0.38)

**Table 12. (formerly Table 10) Continued. Effort by active vessels (May through April)**

	2009	2010			2011			2012		
	Total	Total	Sector Vessels	Common Pool	Total	Sector Vessels	Common Pool	Total	Sector Vessels	Common Pool
<b>50' to &lt;75'</b>										
Number of Groundfish Trips	4,957	2,838	2,451	387	3,381	3,080	301	3,439	3,226	213
Number of non-groundfish Trips	11,089	11,197	5,462	5,735	9,977	5,005	4,972	9,072	4,761	4,311
Number of days absent on groundfish trips	8,162	5,657	5,306	351	6,750	6,489	261	6,626	6,467	159
Number of days absent on non-groundfish trips	12,221	12,078	6,470	5,608	11,172	6,382	4,790	11,338	6,584	4,754
Average trip length on groundfish trips	1.66	2.00	2.17	0.91	2.00	2.11	0.87	1.93	2.00	0.74
(standard deviation)	(2.26)	(2.36)	(2.48)	(0.81)	(2.42)	(2.50)	(0.64)	(2.36)	(2.41)	(0.47)
Average trip length on non-groundfish trips	1.14	1.09	1.19	0.99	1.13	1.28	0.97	1.26	1.39	1.12
(standard deviation)	(1.71)	(1.60)	(1.58)	(1.61)	(1.64)	(1.70)	(1.56)	(1.82)	(1.83)	(1.79)
<b>75' and above</b>										
Number of Groundfish Trips	1,312	1,237	1,206	31	1,180	1,166	14	1,114	1,108	6
Number of non-groundfish Trips	2,747	2,323	1,299	1,024	2,173	1,243	930	2,129	1,237	892
Number of days absent on groundfish trips	7,009	6,828	6,788	40	7,629	7,610	19	7,113	7,097	16
Number of days absent on non-groundfish trips	9,217	8,816	5,203	3,613	7,525	4,689	2,836	7,824	4,596	3,228
Average trip length on groundfish trips	5.39	5.53	5.64	1.29	6.47	6.53	1.33	6.39	6.41	2.69
(standard deviation)	(3.04)	(2.76)	(2.69)	(2.07)	(2.83)	(2.78)	(1.49)	(2.79)	(2.78)	(2.61)
Average trip length on non-groundfish trips	3.51	3.88	4.10	3.60	3.50	3.79	3.11	3.77	3.76	3.78
(standard deviation)	(3.39)	(3.51)	(3.47)	(3.54)	(3.23)	(3.34)	(3.05)	(3.28)	(3.25)	(3.31)

**Table 12. (formerly Table 10) Continued. Effort by active vessels (May through April)**

	2009	2010			2011			2012		
	Total	Total	Sector Vessels	Common Pool	Total	Sector Vessels	Common Pool	Total	Sector Vessels	Common Pool
<b>All Vessels</b>										
Number of Groundfish Trips	25,897	13,474	11,190	2,284	15,958	13,679	2,279	14,496	12,943	1,553
Number of non-groundfish Trips	37,173	38,489	16,527	21,962	33,675	16,795	16,880	32,523	17,090	15,433
Number of days absent on groundfish trips	23,662	17,614	16,056	1,558	20,823	19,334	1,488	19,557	18,581	976
Number of days absent on non-groundfish trips	30,084	30,291	15,329	14,962	26,932	14,796	12,136	27,474	15,317	12,157
Average trip length on groundfish trips	0.92	1.31	1.44	0.68	1.31	1.41	0.66	1.35	1.44	0.63
(standard deviation)	(1.72)	(2.08)	(2.23)	(0.75)	(2.16)	(2.29)	(0.66)	(2.17)	(2.27)	(0.63)
Average trip length on non-groundfish trips	0.88	0.83	0.97	0.73	0.83	0.93	0.74	0.88	0.93	0.83
(standard deviation)	(1.62)	(1.53)	(1.70)	(1.37)	(1.48)	(1.64)	(1.31)	(1.57)	(1.62)	(1.51)

This table will be part of the more comprehensive 2012 final report on the groundfish fishery by the Northeast Fisheries Science Center expected Fall 2013.

Source: NMFS Northeast Regional Office

Run Date: June, 2013

These data are the best available to NOAA's National Marine Fisheries Service (NMFS). Data sources for this report include: (1) Vessels via VMS; (2) Vessels via vessel logbook reports; (3) Dealers via Dealer Electronic reporting. Differences with previous reports are due to corrections made to the database.

**Table 13. (formerly Table 11) Average nominal revenue per active vessel (May through April)**

	2009	2010			2011			2012		
	Total	Total	Sector Vessels	Common Pool	Total	Sector Vessels	Common Pool	Total	Sector Vessels	Common Pool
<b>Less than 30'</b>										
Average all species revenue per vessel (standard deviation)	\$12,332 (\$27,557)	\$15,834 (\$37,972)	\$28,329 (\$72,210)	\$13,563 (\$28,385)	\$16,937 (\$44,184)	\$69,366 (\$133,602)	\$11,238 (\$15,616)	\$17,338 (\$31,817)	\$31,101 (\$62,955)	\$14,989 (\$23,584)
Average groundfish revenue per vessel that landed groundfish** (standard deviation)	\$6,030 (\$11,533)	\$1,437 (\$1,932)	\$4,651 (\$4,276)	\$1,145 (\$1,464)	\$4,113 (\$6,303)	\$10,243 (\$0)	\$3,807 (\$6,304)	\$3,738 (\$7,315)	\$4,188 (\$0)	\$3,708 (\$7,571)
Average groundfish revenue per vessel (all active vessels) (standard deviation)	\$2,809 (\$8,375)	\$531 (\$1,353)	\$930 (\$2,424)	\$458 (\$1,074)	\$1,694 (\$4,480)	\$2,049 (\$4,581)	\$1,655 (\$4,519)	\$1,246 (\$4,500)	\$598 (\$1,583)	\$1,357 (\$4,830)
Average all species revenue on groundfish trips on vessels that took groundfish trips*** (standard deviation)	\$8,208 (\$15,044)	\$7,195 (\$27,083)	\$5,650 (\$3,448)	\$7,335 (\$28,329)	\$9,634 (\$20,580)	\$10,803 (\$0)	\$9,573 (\$21,142)	\$14,459 (\$35,396)	\$4,300 (\$0)	\$15,136 (\$36,531)
Average all species revenue per vessel on groundfish trips (all active vessels) (standard deviation)	\$3,823 (\$10,987)	\$2,656* (\$16,609)	\$1,130 (\$2,645)	\$2,934* (\$18,035)	\$3,778 (\$13,547)	\$2,161 (\$4,831)	\$3,954 (\$14,195)	\$4,820 (\$21,150)	\$614 (\$1,625)	\$5,538 (\$22,838)
<b>30' to &lt;50'</b>										
Average all species revenue per vessel (standard deviation)	\$137,995 (\$121,065)	\$142,121 (\$132,790)	\$174,790 (\$142,439)	\$110,994 (\$114,826)	\$168,792 (\$152,969)	\$196,460 (\$163,698)	\$132,063 (\$129,001)	\$149,735 (\$141,648)	\$176,933 (\$147,966)	\$113,526 (\$124,235)
Average groundfish revenue per vessel that landed groundfish** (standard deviation)	\$97,339 (\$107,672)	\$85,282 (\$116,067)	\$113,799 (\$124,873)	\$20,353 (\$51,449)	\$102,114 (\$143,816)	\$137,037 (\$154,054)	\$9,631 (\$29,958)	\$77,566 (\$116,270)	\$99,121 (\$125,365)	\$10,027 (\$26,053)
Average groundfish revenue per vessel (all active vessels) (standard deviation)	\$56,204 (\$94,871)	\$39,923 (\$90,031)	\$75,866 (\$115,164)	\$5,678* (\$28,528)	\$50,544 (\$113,245)	\$86,354 (\$138,940)	\$3,006* (\$17,320)	\$36,618 (\$88,696)	\$62,116 (\$110,144)	\$2,670* (\$14,054)
Average all species revenue on groundfish trips on vessels that took groundfish trips*** (standard deviation)	\$120,866 (\$118,072)	\$110,165 (\$121,634)	\$145,137 (\$135,009)	\$49,758 (\$56,386)	\$148,303 (\$157,093)	\$185,248 (\$173,734)	\$69,594 (\$63,123)	\$119,631 (\$135,134)	\$144,142 (\$148,494)	\$55,989 (\$54,130)
Average all species revenue per vessel on groundfish trips (all active vessels) (standard deviation)	\$77,122 (\$110,750)	\$58,109 (\$104,019)	\$99,373 (\$130,469)	\$18,793 (\$42,151)	\$80,486 (\$137,247)	\$119,962 (\$165,425)	\$28,082 (\$52,597)	\$62,245 (\$114,281)	\$94,813 (\$138,450)	\$18,884 (\$41,007)

**Table 13. (formerly Table 11) Continued. Average nominal revenue per active vessel (May through April)**

	2009	2010			2011			2012		
	Total	Total	Sector Vessels	Common Pool	Total	Sector Vessels	Common Pool	Total	Sector Vessels	Common Pool
<b>50' to &lt;75'</b>										
Average all species revenue per vessel (standard deviation)	\$392,449 (\$294,511)	\$468,731 (\$406,178)	\$524,231 (\$376,893)	\$393,323 (\$433,661)	\$558,895 (\$467,810)	\$643,314 (\$478,529)	\$426,089 (\$419,898)	\$520,643 (\$424,376)	\$537,408 (\$414,458)	\$489,475 (\$443,533)
Average groundfish revenue per vessel that landed groundfish** (standard deviation)	\$161,768 (\$219,043)	\$215,147 (\$313,402)	\$273,450 (\$335,188)	\$18,646 (\$33,047)	\$247,080 (\$353,337)	\$303,284 (\$370,809)	\$6,936 (\$14,297)	\$186,320 (\$283,419)	\$228,526 (\$299,358)	\$4,651 (\$8,989)
Average groundfish revenue per vessel (all active vessels) (standard deviation)	\$110,359 (\$195,869)	\$116,992 (\$254,440)	\$199,071 (\$310,598)	\$5,472 (\$19,619)	\$135,836 (\$289,053)	\$220,998 (\$343,845)	\$1,861 (\$7,909)	\$111,973 (\$237,661)	\$171,407 (\$277,314)	\$1,476 (\$5,500)
Average all species revenue on groundfish trips on vessels that took groundfish trips*** (standard deviation)	\$221,112 (\$259,229)	\$273,689 (\$351,456)	\$347,628 (\$375,632)	\$46,773 (\$44,496)	\$329,833 (\$396,946)	\$402,852 (\$414,562)	\$46,884 (\$46,222)	\$262,878 (\$319,996)	\$307,321 (\$332,334)	\$38,326 (\$43,009)
Average all species revenue per vessel on groundfish trips (all active vessels) (standard deviation)	\$147,096 (\$235,675)	\$148,826 (\$292,534)	\$247,511 (\$353,716)	\$14,744 (\$32,964)	\$182,893 (\$337,697)	\$290,428 (\$395,514)	\$13,722 (\$32,670)	\$148,921 (\$273,575)	\$223,506 (\$314,596)	\$10,256 (\$27,706)

**Table 13. (formerly Table 11) Continued. Average nominal revenue per active vessel (May through April)**

	2009	2010			2011			2012		
	Total	Total	Sector Vessels	Common Pool	Total	Sector Vessels	Common Pool	Total	Sector Vessels	Common Pool
<b>75' and above</b>										
Average all species revenue per vessel (standard deviation)	\$801,758 (\$476,677)	\$1,080,342 (\$620,761)	\$1,181,928 (\$589,463)	\$877,171 (\$639,287)	\$1,248,690 (\$674,320)	\$1,316,712 (\$656,960)	\$1,091,269 (\$697,086)	\$1,192,922 (\$659,162)	\$1,212,383 (\$610,827)	\$1,149,135 (\$764,441)
Average groundfish revenue per vessel that landed groundfish** (standard deviation)	\$349,940 (\$396,588)	\$501,144 (\$565,163)	\$587,876 (\$571,605)	\$16,887 (\$53,548)	\$501,077 (\$558,782)	\$639,142 (\$557,464)	\$2,508 (\$8,245)	\$412,152 (\$442,121)	\$500,489 (\$439,891)	\$2,017 (\$5,094)
Average groundfish revenue per vessel (all active vessels) (standard deviation)	\$227,868 (\$360,584)	\$338,379 (\$519,929)	\$504,971 (\$567,860)	\$5,196* (\$29,873)	\$358,529 (\$523,633)	\$512,892 (\$560,513)	\$1,290 (\$5,967)	\$278,295 (\$411,107)	\$401,627 (\$441,594)	\$799 (\$3,258)
Average all species revenue on groundfish trips on vessels that took groundfish trips*** (standard deviation)	\$520,872 (\$442,325)	\$736,459 (\$609,679)	\$769,224 (\$606,110)	\$81,163 (\$96,180)	\$776,481 (\$623,663)	\$838,406 (\$608,182)	\$20,993 (\$17,402)	\$629,945 (\$500,333)	\$682,641 (\$485,546)	\$8,131 (\$5,105)
Average all species revenue per vessel on groundfish trips (all active vessels) (standard deviation)	\$282,644 (\$416,327)	\$396,555 (\$578,468)	\$591,711 (\$622,809)	\$6,243 (\$31,095)	\$441,791 (\$607,448)	\$631,392 (\$640,121)	\$2,999 (\$9,549)	\$344,585 (\$484,907)	\$497,232 (\$514,068)	\$1,129 (\$3,333)

\* Note the relatively high standard deviation for these values. It may be that a few unusually high observations influenced the mean value.

\*\* Comparable to "Average groundfish revenue per vessel" in fishing year 2011 report.

\*\*\* Comparable to "Average all species revenue per vessel on groundfish trips" in fishing year 2011 report.

This table will be part of the more comprehensive 2012 final report on the groundfish fishery by the Northeast Fisheries Science Center expected Fall 2013.

Source: NMFS Northeast Regional Office

Run Date: June, 2013

These data are the best available to NOAA's National Marine Fisheries Service (NMFS). Data sources for this report include: (1) Vessels via VMS; (2) Vessels via vessel logbook reports; (3) Dealers via Dealer Electronic reporting. Differences with previous reports are due to corrections made to the database.

9/11/2013

**Table 14. (formerly Table 12) Average nominal revenue per trip and day absent (May through April)**

	2009	2010			2011			2012		
	Total	Total	Sector Vessels	Common Pool	Total	Sector Vessels	Common Pool	Total	Sector Vessels	Common Pool
<b>Less than 30'</b>										
Average revenue per groundfish trip	\$642	\$1,270	\$5,650	\$1,204	\$701	\$720	\$700	\$1,205	\$717	\$1,221
(standard deviation)	(\$900)	(\$1,927)	(\$3,448)	(\$1,840)	(\$1,054)	(\$459)	(\$1,079)	(\$1,610)	(\$412)	(\$1,632)
Average revenue per non-groundfish trip	\$399	\$585	\$863	\$508	\$578	\$1,689	\$348	\$550	\$1,112	\$430
(standard deviation)	(\$519)	(\$858)	(\$822)	(\$852)	(\$737)	(\$990)	(\$382)	(\$693)	(\$871)	(\$583)
Average revenue per day on groundfish trip	\$1,934	\$2,499	\$13,642	\$2,332	\$1,916	\$1,592	\$1,935	\$2,750	\$1,508	\$2,791
(standard deviation)	(\$2,699)	(\$3,505)	(\$5,664)	(\$3,212)	(\$2,159)	(\$947)	(\$2,208)	(\$2,890)	(\$795)	(\$2,925)
Average revenue per day on non-groundfish trip	\$1,360	\$1,856	\$2,851	\$1,576	\$1,849	\$5,231	\$1,154	\$1,756	\$3,809	\$1,370
(standard deviation)	(\$2,065)	(\$3,110)	(\$4,039)	(\$2,729)	(\$2,346)	(\$3,114)	(\$1,346)	(\$2,339)	(\$2,465)	(\$2,103)
<b>30' to &lt;50'</b>										
Average revenue per groundfish trip	\$1,921	\$2,854	\$2,929	\$2,528	\$2,880	\$2,885	\$2,851	\$2,530	\$2,481	\$2,899
(standard deviation)	(\$2,072)	(\$2,879)	(\$2,984)	(\$2,346)	(\$2,592)	(\$2,632)	(\$2,362)	(\$2,384)	(\$2,412)	(\$2,129)
Average revenue per non-groundfish trip	\$1,336	\$1,626	\$1,772	\$1,529	\$1,726	\$1,658	\$1,796	\$1,727	\$1,717	\$1,739
(standard deviation)	(\$3,085)	(\$2,253)	(\$1,851)	(\$2,482)	(\$2,174)	(\$1,753)	(\$2,535)	(\$2,436)	(\$1,714)	(\$3,071)
Average revenue per day on groundfish trip	\$5,770	\$6,781	\$7,124	\$5,285	\$6,281	\$6,460	\$5,285	\$5,632	\$5,655*	\$5,459
(standard deviation)	(\$23,288)	(\$8,027)	(\$8,460)	(\$5,532)	(\$8,310)	(\$7,987)	(\$9,854)	(\$26,937)	(\$28,611)	(\$5,353)
Average revenue per day on non-groundfish trip	\$3,636	\$4,662	\$5,409	\$4,151	\$4,634	\$4,896	\$4,376	\$4,966	\$5,273	\$4,605
(standard deviation)	(\$10,046)	(\$14,191)	(\$19,328)	(\$9,117)	(\$8,940)	(\$10,350)	(\$7,283)	(\$15,153)	(\$17,441)	(\$11,902)

**Table 14. (formerly Table 12) Continued. Average nominal revenue per trip and day absent  
(May through April)**

	2009	2010			2011			2012		
	Total	Total	Sector Vessels	Common Pool	Total	Sector Vessels	Common Pool	Total	Sector Vessels	Common Pool
<b>50' to &lt;75'</b>										
Average revenue per groundfish trip	\$7,003	\$11,380	\$12,623	\$3,505	\$11,414	\$12,164	\$3,738	\$9,042	\$9,410	\$3,456
(standard deviation)	(\$10,239)	(\$14,676)	(\$15,371)	(\$3,361)	(\$15,141)	(\$15,647)	(\$2,273)	(\$12,505)	(\$12,816)	(\$2,011)
Average revenue per non-groundfish trip	\$5,222	\$6,200	\$6,333	\$6,073	\$7,952	\$9,095	\$6,801	\$8,519	\$8,697	\$8,322
(standard deviation)	(\$13,221)	(\$17,893)	(\$15,300)	(\$20,053)	(\$22,230)	(\$24,461)	(\$19,667)	(\$22,154)	(\$20,262)	(\$24,072)
Average revenue per day on groundfish trip	\$6,031*	\$7,232	\$7,616	\$4,799	\$6,604	\$6,715	\$5,471	\$5,259	\$5,240	\$5,541
(standard deviation)	(\$36,572)	(\$8,217)	(\$8,454)	(\$5,980)	(\$5,707)	(\$5,826)	(\$4,142)	(\$3,875)	(\$3,839)	(\$4,382)
Average revenue per day on non-groundfish trip	\$6,033	\$6,318	\$6,552	\$6,093	\$8,202	\$7,782	\$8,626	\$8,321	\$7,885	\$8,809
(standard deviation)	(\$15,388)	(\$20,574)	(\$17,647)	(\$23,034)	(\$27,058)	(\$13,195)	(\$35,990)	(\$24,640)	(\$16,036)	(\$31,608)
<b>75' and above</b>										
Average revenue per groundfish trip	\$27,790	\$37,508	\$38,270	\$7,854	\$43,430	\$43,862	\$7,498	\$35,402	\$35,557	\$6,776
(standard deviation)	(\$20,272)	(\$24,430)	(\$24,065)	(\$19,843)	(\$23,712)	(\$23,517)	(\$5,065)	(\$21,522)	(\$21,474)	(\$5,360)
Average revenue per non-groundfish trip	\$24,378	\$34,440	\$35,440	\$33,170	\$43,074	\$44,659	\$40,956	\$45,673	\$46,726	\$44,214
(standard deviation)	(\$44,026)	(\$59,885)	(\$58,350)	(\$61,784)	(\$72,922)	(\$71,831)	(\$74,340)	(\$76,160)	(\$74,660)	(\$78,211)
Average revenue per day on groundfish trip	\$6,409	\$7,543	\$7,631	\$4,157	\$7,134	\$7,055	\$13,760	\$5,554	\$5,567	\$3,207
(standard deviation)	(\$17,154)	(\$9,766)	(\$9,869)	(\$2,297)	(\$5,075)	(\$4,702)	(\$17,500)	(\$3,131)	(\$3,132)	(\$1,832)
Average revenue per day on non-groundfish trip	\$9,556	\$9,975	\$9,197	\$10,957	\$19,707*	\$21,429*	\$17,370	\$16,281	\$18,112	\$13,658
(standard deviation)	(\$26,262)	(\$17,239)	(\$19,260)	(\$14,234)	(\$146,812)	(\$189,980)	(\$42,678)	(\$32,198)	(\$35,231)	(\$27,077)

\* Note the relatively high standard deviation for these values. It may be that a few unusually high observations influenced the mean value.

This table will be part of the more comprehensive 2012 final report on the groundfish fishery by the Northeast Fisheries Science Center expected Fall 2013.

Source: NMFS Northeast Regional Office

Run Date: June, 2013

These data are the best available to NOAA's National Marine Fisheries Service (NMFS). Data sources for this report include: (1) Vessels via VMS; (2) Vessels via vessel logbook reports; (3) Dealers via Dealer Electronic reporting. Differences with previous reports are due to corrections made to the database.

**Table 18. (formerly Table 35) Distribution of nominal revenue from all species (all trips) among vessels.**

Percent Bracket	2009	Year								
		2010			2011			2012		
		Total	Sector Vessels	Common Pool	Total	Sector Vessels	Common Pool	Total	Sector Vessels	Common Pool
<b>Top 1%</b>	\$17,557,159 (6.7%)	\$21,403,741 (7.3%)	\$12,504,504 (6.4%)	\$10,681,234 (11.0%)	\$21,414,348 (6.5%)	\$14,189,598 (6.1%)	\$9,016,729 (9.3%)	\$21,437,539 (7.0%)	\$13,997,754 (6.7%)	\$9,457,717 (9.8%)
<b>20%</b>	\$139,949,485 (53.2%)	\$168,353,712 (57.3%)	\$99,678,386 (50.6%)	\$56,663,220 (58.4%)	\$187,885,619 (56.8%)	\$118,664,943 (50.6%)	\$58,552,924 (60.7%)	\$172,472,166 (56.5%)	\$105,884,113 (50.6%)	\$60,331,815 (62.7%)
<b>40%</b>	\$58,135,273 (22.1%)	\$60,088,566 (20.5%)	\$46,906,288 (23.8%)	\$17,929,394 (18.5%)	\$71,317,127 (21.6%)	\$57,492,216 (24.5%)	\$17,708,485 (18.4%)	\$65,892,462 (21.6%)	\$50,226,382 (24.0%)	\$16,452,436 (17.1%)
<b>60%</b>	\$31,116,852 (11.8%)	\$29,284,529 (10.0%)	\$22,441,205 (11.4%)	\$9,025,618 (9.3%)	\$32,772,221 (9.9%)	\$26,105,251 (11.1%)	\$8,223,843 (8.5%)	\$29,645,129 (9.7%)	\$23,142,986 (11.1%)	\$7,262,343 (7.5%)
<b>80%</b>	\$14,337,294 (5.5%)	\$13,297,877 (4.5%)	\$11,920,137 (6.1%)	\$2,440,621 (2.5%)	\$14,941,537 (4.5%)	\$13,502,020 (5.8%)	\$2,675,815 (2.8%)	\$13,743,528 (4.5%)	\$12,318,184 (5.9%)	\$2,445,899 (2.5%)
<b>99%</b>	\$1,809,720 (.7%)	\$1,379,421 (.5%)	\$3,354,446 (1.7%)	\$262,527 (.3%)	\$2,486,014 (.8%)	\$4,367,540 (1.9%)	\$317,202 (.3%)	\$2,317,187 (.8%)	\$3,673,161 (1.8%)	\$314,438 (.3%)
<b>Bottom 1%</b>	\$826 (.0%)	\$969 (.0%)	\$918 (.0%)	\$316 (.0%)	\$1,077 (.0%)	\$821 (.0%)	\$558 (.0%)	\$848 (.0%)	\$1,278 (.0%)	\$353 (.0%)
<b>Grand Total</b>	\$262,906,608	\$293,808,814	\$196,805,885	\$97,002,930	\$330,817,943	\$234,322,388	\$96,495,555	\$305,508,860	\$209,243,859	\$96,265,001
<b>Number of Vessels*</b>	916	854	435	419	776	442	337	764	446	320

Allocated groundfish revenue include estimate of missing dealer reports; dealer and vessel-reported revenue for other species, including non-allocated groundfish species.

\* Note sector vessel plus common pool vessel counts may exceed the total vessel count because vessels may switch between sector and common pool eligibilities during the fishing year.

This table will be part of the more comprehensive 2012 final report on the groundfish fishery by the Northeast Fisheries Science Center expected Fall 2013.

Source: NMFS Northeast Regional Office

Run Date: June, 2013

These data are the best available to NOAA's National Marine Fisheries Service (NMFS). Data sources for this report include: (1) Vessels via VMS; (2) Vessels via vessel logbook reports; (3) Dealers via Dealer Electronic reporting. Differences with previous reports are due to corrections made to the database.

9/11/2013

**Table 19. (formerly Table 36) Distribution of nominal revenue from groundfish (all trips) among vessels.**

Percent Bracket	2009	Year								
		2010			2011			2012		
		Total	Sector Vessels	Common Pool	Total	Sector Vessels	Common Pool	Total	Sector Vessels	Common Pool
<b>Top 1%</b>	\$8,731,073 (10.6%)	\$10,030,164 (12.1%)	\$8,430,225 (10.4%)	NA NA	\$9,324,833 (10.3%)	\$7,837,611 (8.7%)	NA NA	\$7,098,660 (10.2%)	\$5,703,675 (8.2%)	NA NA
<b>20%</b>	\$45,952,303 (55.7%)	\$53,393,718 (64.2%)	\$45,868,914 (56.5%)	NA NA	\$59,925,526 (66.3%)	\$51,425,972 (57.4%)	NA NA	\$46,072,732 (66.0%)	\$41,772,838 (60.4%)	NA NA
<b>40%</b>	\$18,882,918 (22.9%)	\$14,553,045 (17.5%)	\$16,886,373 (20.8%)	NA NA	\$15,570,153 (17.2%)	\$18,676,768 (20.8%)	NA NA	\$12,620,460 (18.1%)	\$13,949,016 (20.2%)	NA NA
<b>60%</b>	\$7,482,611 (9.1%)	\$4,562,233 (5.5%)	\$7,082,206 (8.7%)	NA NA	\$4,894,721 (5.4%)	\$8,194,227 (9.1%)	NA NA	\$3,489,661 (5.0%)	\$5,815,956 (8.4%)	NA NA
<b>80%</b>	\$1,395,746 (1.7%)	\$614,661 (.7%)	\$2,566,337 (3.2%)	NA NA	\$720,451 (.8%)	\$3,005,901 (3.4%)	NA NA	\$476,390 (.7%)	\$1,755,248 (2.5%)	NA NA
<b>99%</b>	\$65,441 (.1%)	\$23,500 (.0%)	\$289,039 (.4%)	NA NA	\$17,762 (.0%)	\$463,429 (.5%)	NA NA	\$20,260 (.0%)	\$139,007 (.2%)	NA NA
<b>Bottom 1%</b>	\$39 (.0%)	\$8 (.0%)	\$52 (.0%)	NA NA	\$8 (.0%)	\$21 (.0%)	NA NA	\$9 (.0%)	\$19 (.0%)	NA NA
<b>Grand Total</b>	\$82,510,132	\$83,177,330	\$81,123,145	\$2,054,184	\$90,453,455	\$89,603,929	\$849,526	\$69,778,174	\$69,135,759	\$642,414
<b>Number of Vessels*</b>	555	434	308	126	417	303	115	403	306	98

NA - Landing values not displayed due to confidentiality

Allocated groundfish revenue include estimate of missing dealer reports; dealer and vessel-reported revenue for other species, including non-allocated groundfish species.

\* Note sector vessel plus common pool vessel counts may exceed the total vessel count because vessels may switch between sector and common pool eligibilites during the fishing year.

This table will be part of the more comprehensive 2012 final report on the groundfish fishery by the Northeast Fisheries Science Center expected Fall 2013.

Source: NMFS Northeast Regional Office

Run Date: June, 2013

These data are the best available to NOAA's National Marine Fisheries Service (NMFS). Data sources for this report include: (1) Vessels via VMS; (2) Vessels via vessel logbook reports; (3) Dealers via Dealer Electronic reporting. Differences with previous reports are due to corrections made to the database.

9/11/2013

**Table 22. (formerly Table 39) Number of vessels with revenue from all species (on all trips) by cumulative quartiles (ordered high revenue to low).**

<b>Percent of all species revenue</b>	<b>2009</b>	<b>2010</b>	<b>2011</b>	<b>2012</b>
<b>Top 25%</b>	48 (5.2%)	40 (4.7%)	41 (5.3%)	39 (5.1%)
<b>Top 50%</b>	134 (14.6%)	108 (12.6%)	106 (13.7%)	102 (13.4%)
<b>Top 75%</b>	295 (32.2%)	240 (28.1%)	222 (28.6%)	217 (28.4%)
<b>100%</b>	916 (100.0%)	854 (100.0%)	776 (100.0%)	764 (100.0%)

**Table 23. (formerly Table 40) Number of vessels with revenue from groundfish (on all trips) by cumulative quartiles (ordered high revenue to low).**

<b>Percent of groundfish revenue</b>	<b>2009</b>	<b>2010</b>	<b>2011</b>	<b>2012</b>
<b>Top 25%</b>	21 (3.8%)	14 (3.2%)	15 (3.6%)	14 (3.5%)
<b>Top 50%</b>	65 (11.7%)	39 (9.0%)	40 (9.6%)	38 (9.4%)
<b>Top 75%</b>	146 (26.3%)	84 (19.4%)	80 (19.2%)	78 (19.4%)
<b>100%</b>	555 (100.0%)	434 (100.0%)	417 (100.0%)	403 (100.0%)

This table will be part of the more comprehensive 2012 final report on the groundfish fishery by the Northeast Fisheries Science Center expected Fall 2013.

Source: NMFS Northeast Regional Office

Run Date: June, 2013

**Table 26. (formerly Table 43) Changes in employment indicators by vessel size category  
(May through April, all trips)**

Vessel Size	Year			
	2009	2010	2011	2012
<b>Less than 30'</b>				
Total CREW POSITIONS	97	83	77	71
Total CREW-TRIPS	3,145	2,699	2,592	2,226
Total CREW-DAYS	1,104	935	886	779
Crew-days/Crew-trips	0.35	0.35	0.34	0.35
<b>30' to &lt; 50'</b>				
Total CREW POSITIONS	842	854	809	794
Total CREW-TRIPS	76,253	64,036	65,648	66,518
Total CREW-DAYS	33,617	30,242	32,606	34,298
Crew-days/Crew-trips	0.44	0.47	0.50	0.52
<b>50' to &lt; 75'</b>				
Total CREW POSITIONS	672	637	649	660
Total CREW-TRIPS	40,616	36,997	36,876	37,815
Total CREW-DAYS	63,010	57,337	59,018	75,095
Crew-days/Crew-trips	1.55	1.55	1.60	1.99
<b>75' and above</b>				
Total CREW POSITIONS	548	525	547	500
Total CREW-TRIPS	15,208	14,122	13,735	14,390
Total CREW-DAYS	67,203	68,069	67,698	74,834
Crew-days/Crew-trips	4.42	4.82	4.93	5.20
<b>All Sizes</b>				
Total CREW POSITIONS	2,159	2,099	2,083	2,025
Total CREW-TRIPS	135,222	117,854	118,851	120,949
Total CREW-DAYS	164,935	156,584	160,209	185,006
Crew-days/Crew-trips	1.22	1.33	1.35	1.53

This table will be part of the more comprehensive 2012 final report on the groundfish fishery by the Northeast Fisheries Science Center expected Fall 2013.

Source: NMFS Northeast Regional Office

Run Date: June, 2013

These data are the best available to NOAA's National Marine Fisheries Service (NMFS). Data sources for this report include: (1) Vessels via VMS; (2) Vessels via vessel logbook reports; (3) Dealers via Dealer Electronic reporting. Differences with previous reports are due to corrections made to the database.

9/11/2013

**Table 27. (formerly Table 44) Changes in employment indicators by home port state  
(May through April, all trips)**

Home Port State	Year			
	2009	2010	2011	2012
<b>CT</b>				
Total CREW POSITIONS	34	34	41	32
Total CREW-TRIPS	1,752	1,877	1,444	1,350
Total CREW-DAYS	3,117	3,537	2,693	3,329
Crew-days/Crew-trips	1.78	1.88	1.87	2.47
<b>MA</b>				
Total CREW POSITIONS	1,093	1,056	1,026	997
Total CREW-TRIPS	63,921	51,317	52,544	55,193
Total CREW-DAYS	83,932	75,729	80,174	97,945
Crew-days/Crew-trips	1.31	1.48	1.53	1.77
<b>ME</b>				
Total CREW POSITIONS	214	211	207	214
Total CREW-TRIPS	14,694	14,416	13,173	13,839
Total CREW-DAYS	13,516	14,090	13,978	19,846
Crew-days/Crew-trips	0.92	0.98	1.06	1.43
<b>NH</b>				
Total CREW POSITIONS	96	97	93	89
Total CREW-TRIPS	9,593	7,221	7,490	7,777
Total CREW-DAYS	4,782	3,512	4,519	4,883
Crew-days/Crew-trips	0.50	0.49	0.60	0.63

**Table 27. (formerly Table 44) Continued. Changes in employment indicators by home port state (May through April, all trips)**

Home Port State	Year			
	2009	2010	2011	2012
<b>NJ</b>				
Total CREW POSITIONS	146	137	139	141
Total CREW-TRIPS	10,531	9,691	9,494	8,041
Total CREW-DAYS	9,496	9,146	8,966	9,672
Crew-days/Crew-trips	0.90	0.94	0.94	1.20
<b>NY</b>				
Total CREW POSITIONS	204	201	213	201
Total CREW-TRIPS	14,692	14,404	14,901	14,411
Total CREW-DAYS	15,057	14,713	15,215	14,449
Crew-days/Crew-trips	1.02	1.02	1.02	1.00
<b>RI</b>				
Total CREW POSITIONS	249	242	241	225
Total CREW-TRIPS	15,335	14,788	15,660	16,133
Total CREW-DAYS	23,183	25,138	24,047	24,263
Crew-days/Crew-trips	1.51	1.70	1.54	1.50
<b>OTHER</b>				
<b>NORTHEAS</b>				
Total CREW POSITIONS	122	120	123	125
Total CREW-TRIPS	4,704	4,140	4,145	4,205
Total CREW-DAYS	11,851	10,718	10,616	10,620
Crew-days/Crew-trips	2.52	2.59	2.56	2.53
<b>Total</b>				
Total CREW POSITIONS	2,159	2,099	2,083	2,025
Total CREW-TRIPS	135,222	117,854	118,851	120,949
Total CREW-DAYS	164,935	156,584	160,209	185,006
Crew-days/Crew-trips	1.22	1.33	1.35	1.53

This table will be part of the more comprehensive 2012 final report on the groundfish fishery by the Northeast Fisheries Science Center expected Fall 2013.

Source: NMFS Northeast Regional Office

Run Date: June, 2013

These data are the best available to NOAA's National Marine Fisheries Service (NMFS). Data sources for this report include: (1) Vessels via VMS; (2) Vessels via vessel logbook reports; (3) Dealers via Dealer Electronic reporting. Differences with previous reports are due to corrections made to the database.

9/11/2013

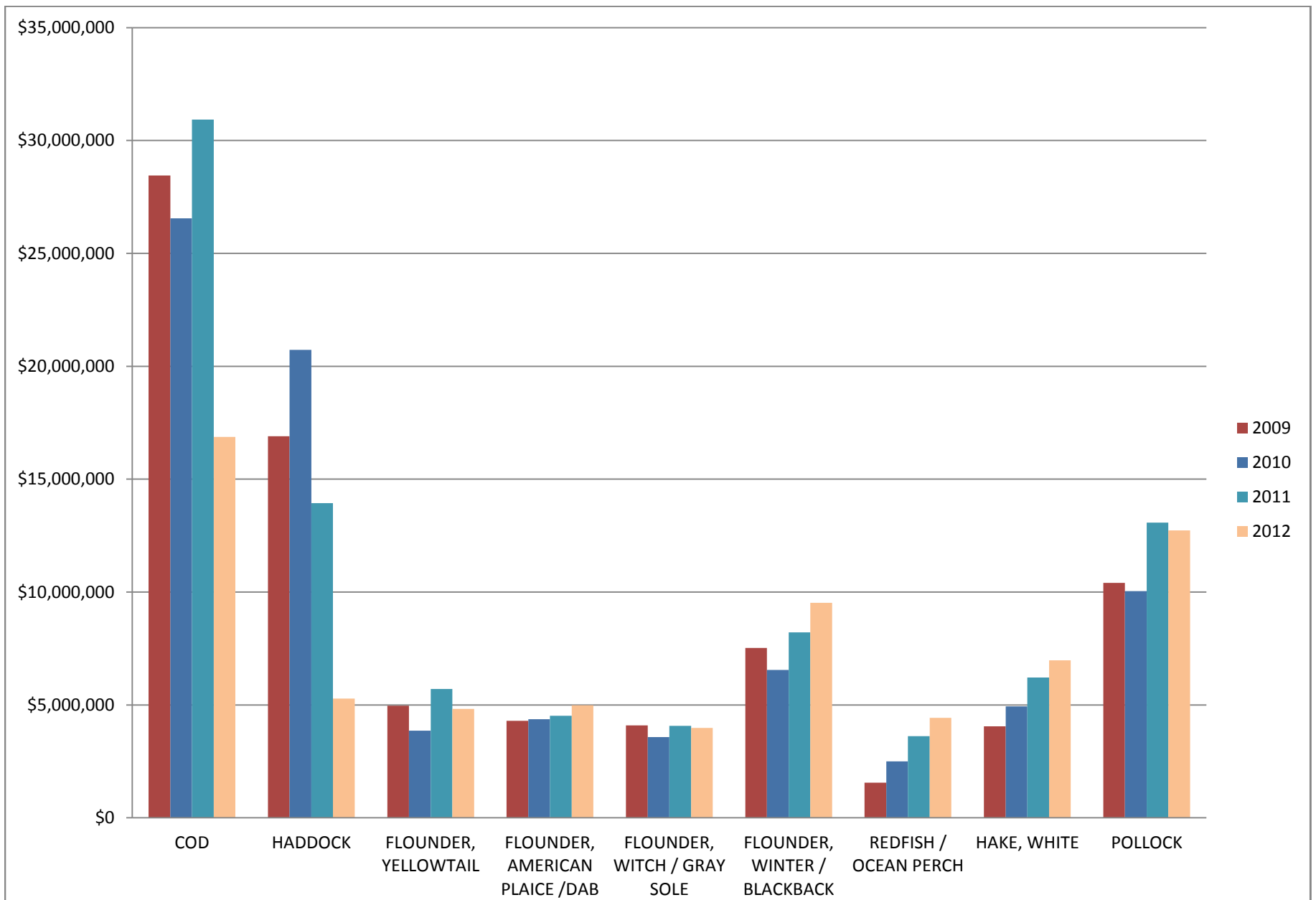


Figure 8. Allocated groundfish nominal revenue by species (all trips).

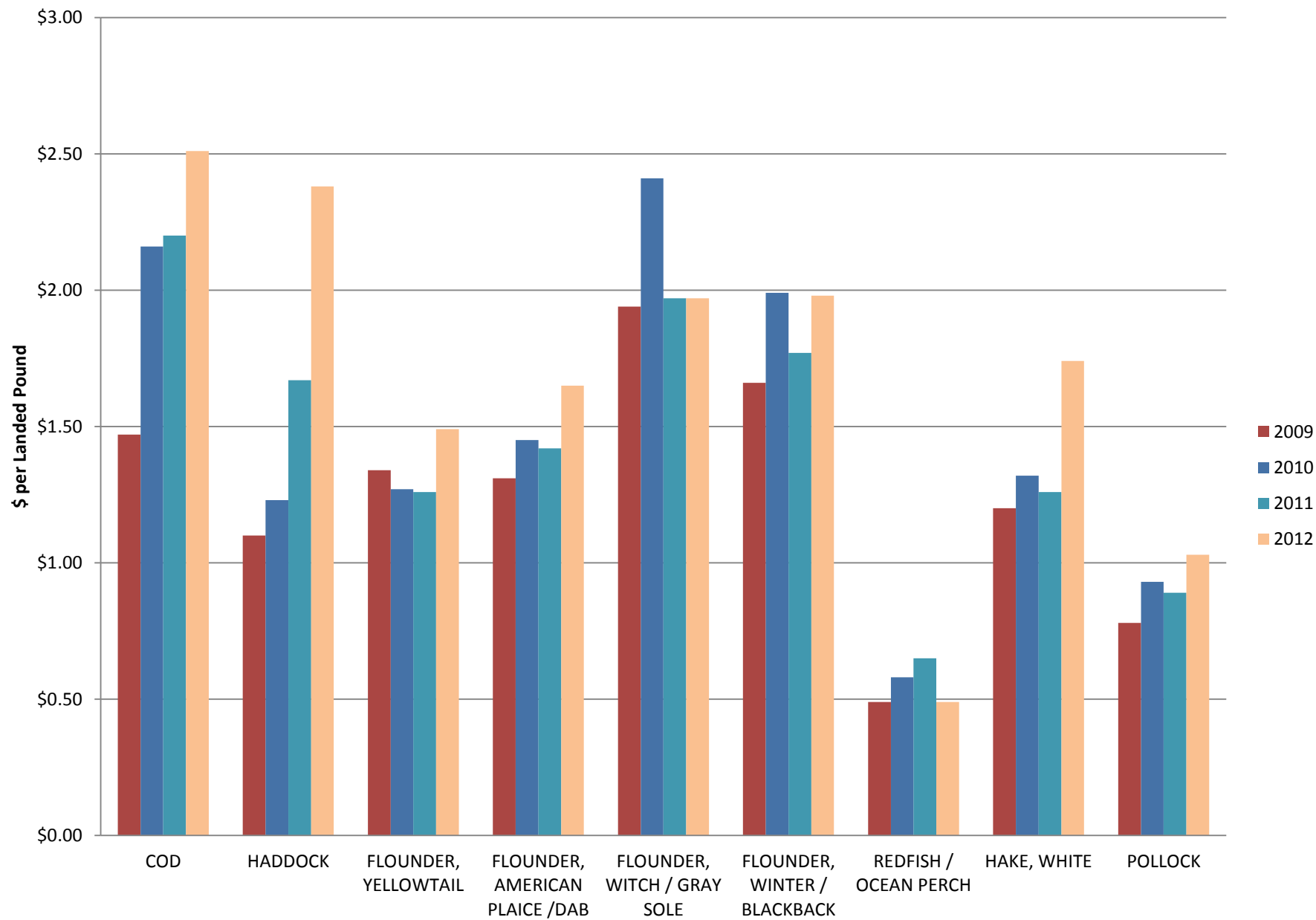
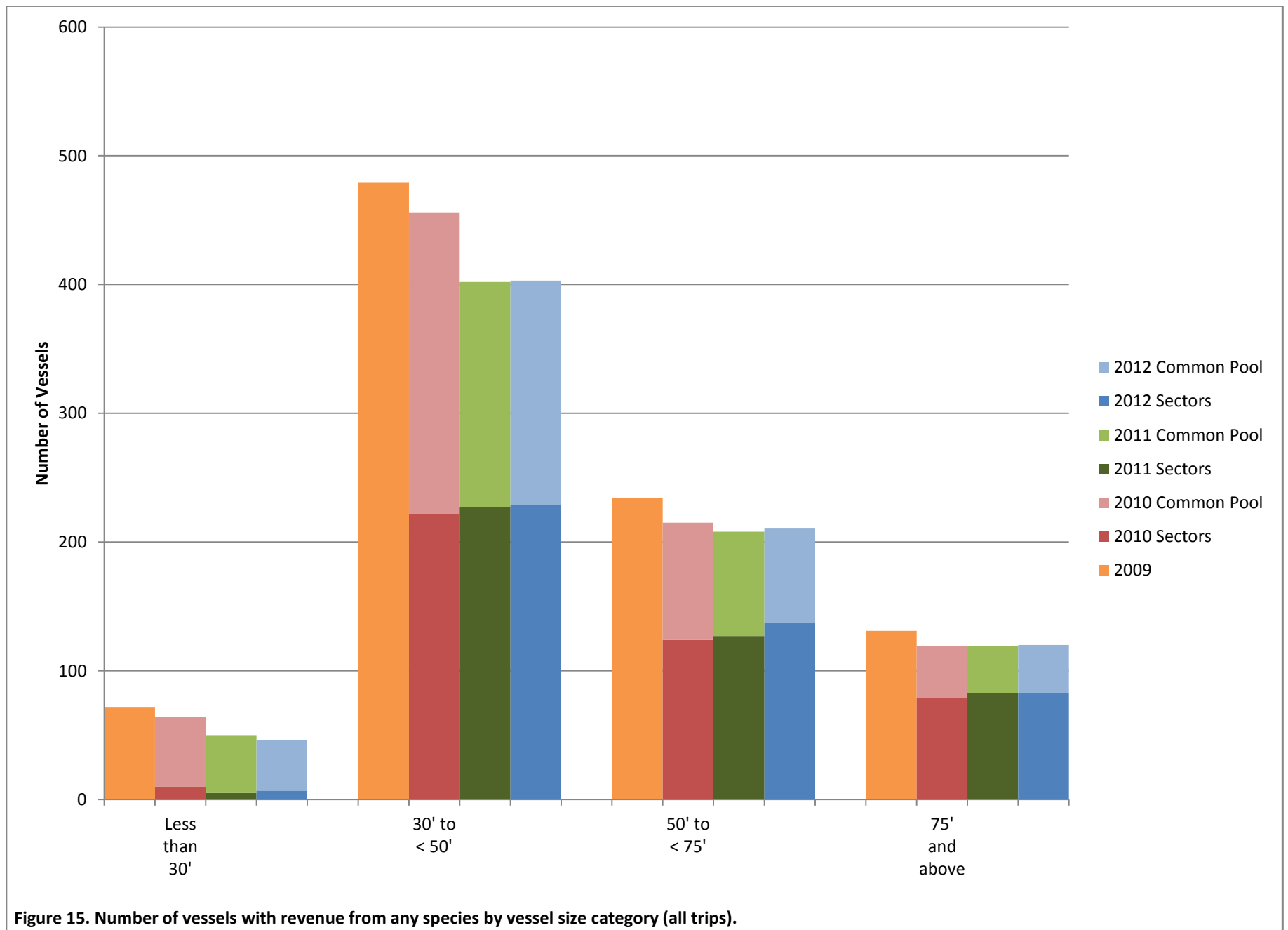


Figure 9. Yearly average nominal price by allocated groundfish species.



**Figure 10. Yearly nominal average price of combined allocated groundfish vs. other species, including non-allocated groundfish species.**



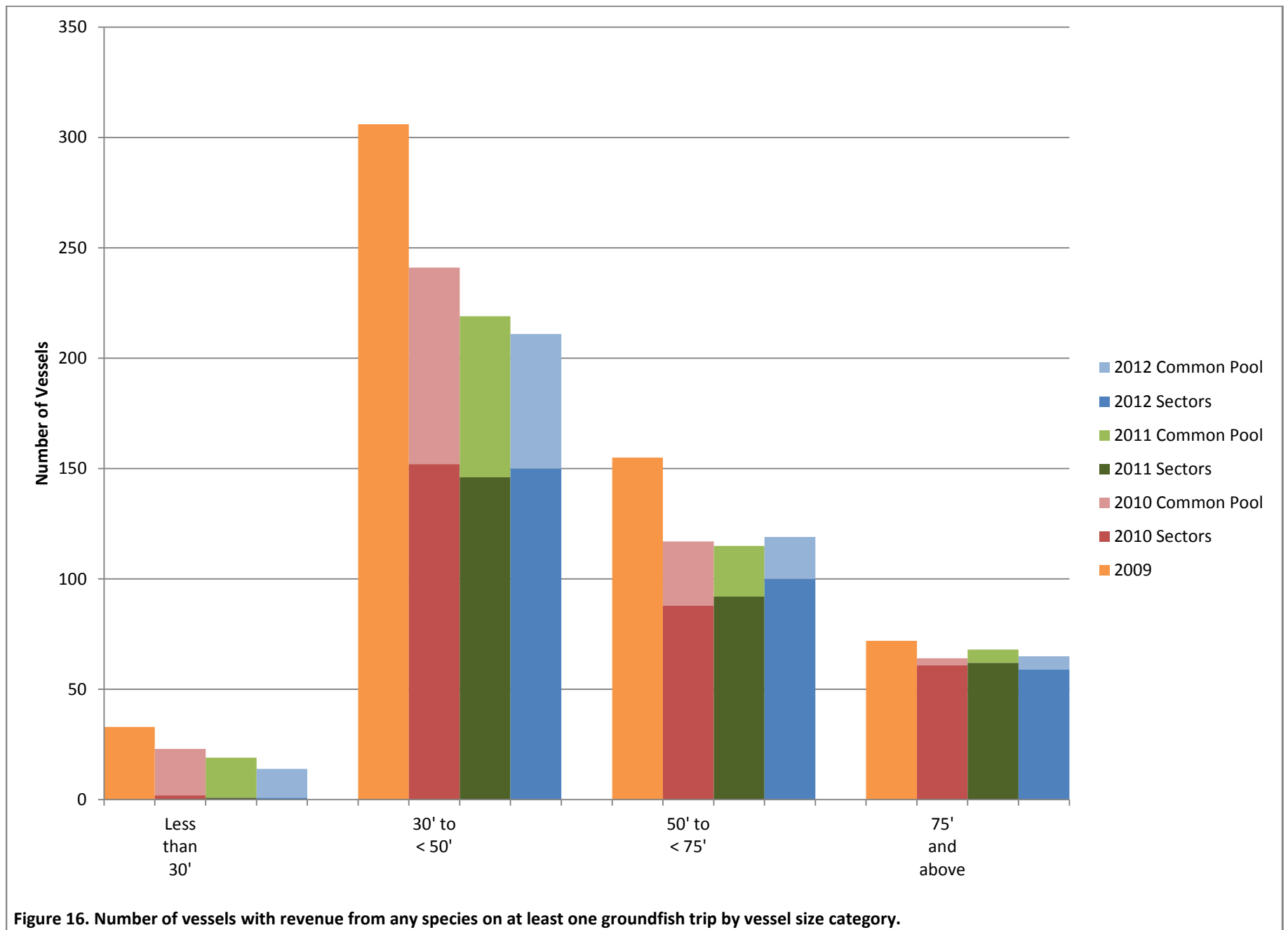


Table A. Common Pool Groundfish Landings by Month

Landed Weight in Metric Tons

FISHING YEAR	YEAR	MONTH	GB Cod	GOM Cod	GB Haddock	GOM Haddock	GB Yellowtail Flounder	SNE/MA Yellowtail Flounder	CC/GOM Yellowtail Flounder	Plaice	Witch Flounder	GB Winter Flounder	GOM Winter Flounder	Redfish	White Hake	Pollock	
2010	2010	5	2.3	NA	NA	NA	NA	NA	NA	NA	NA	NA	NA	NA	NA	NA	
		6	4.0	NA	NA	NA	NA	NA	NA	NA	NA	NA	NA	NA	NA	NA	
		7	4.1	NA	NA	NA	NA	NA	NA	NA	NA	NA	NA	NA	NA	NA	
		8	1.4	NA	NA	NA	NA	NA	NA	NA	NA	NA	NA	NA	NA	NA	
		9	0.4	NA	NA	NA	NA	NA	NA	NA	NA	NA	NA	NA	NA	NA	
		10	0.3	NA	NA	NA	NA	NA	NA	NA	NA	NA	NA	NA	NA	NA	
		11	0.3	NA	NA	NA	NA	NA	NA	NA	NA	NA	NA	NA	NA	NA	
		12	0.8	NA	NA	NA	NA	NA	NA	NA	NA	NA	NA	NA	NA	NA	
	2011	1	10.0	NA	NA	NA	NA	NA	NA	NA	NA	NA	NA	NA	NA	NA	
		2	3.5	NA	NA	NA	NA	NA	NA	NA	NA	NA	NA	NA	NA	NA	
		3	20.4	NA	NA	NA	NA	NA	NA	NA	NA	NA	NA	NA	NA	NA	
		4	5.3	NA	NA	NA	NA	NA	NA	NA	NA	NA	NA	NA	NA	NA	
	2010 Total			52.9	167.2	80.4	6.0	7.8	14.7	16.4	21.8	25.9	5.9	20.6	6.6	29.9	125.1
	2011	2011	5	5.4	2.2	NA	NA	NA	NA	NA	NA	NA	NA	NA	NA	NA	2.6
			6	16.8	11.8	NA	NA	NA	NA	NA	NA	NA	NA	NA	NA	NA	3.5
			7	8.0	16.5	NA	NA	NA	NA	NA	NA	NA	NA	NA	NA	NA	10.9
8			2.9	7.4	NA	NA	NA	NA	NA	NA	NA	NA	NA	NA	NA	6.8	
9			2.0	3.9	NA	NA	NA	NA	NA	NA	NA	NA	NA	NA	NA	8.4	
10			1.8	0.6	NA	NA	NA	NA	NA	NA	NA	NA	NA	NA	NA	0.2	
11			0.7	2.0	NA	NA	NA	NA	NA	NA	NA	NA	NA	NA	NA	0.7	
12			1.5	5.0	NA	NA	NA	NA	NA	NA	NA	NA	NA	NA	NA	3.2	
2012		1	0.8	2.9	NA	NA	NA	NA	NA	NA	NA	NA	NA	NA	NA	3.9	
		2	0.8	5.3	NA	NA	NA	NA	NA	NA	NA	NA	NA	NA	NA	1.4	
		3	5.4	0.3	NA	NA	NA	NA	NA	NA	NA	NA	NA	NA	NA	1.7	
		4	1.8	1.1	NA	NA	NA	NA	NA	NA	NA	NA	NA	NA	NA	2.6	
2011 Total			47.8	59.1	10.2	1.3	1.8	11.5	8.6	3.7	3.9	1.1	2.6	3.3	9.9	46.1	

Table A. Common Pool Groundfish Landings by Month

Landed Weight in Metric Tons

FISHING YEAR	YEAR	MONTH	GB Cod	GOM Cod	GB Haddock	GOM Haddock	GB Yellowtail Flounder	SNE/MA Yellowtail Flounder	CC/GOM Yellowtail Flounder	Plaice	Witch Flounder	GB Winter Flounder	GOM Winter Flounder	Redfish	White Hake	Pollock
2012	2012	5	1.8	NA	NA	NA	NA	NA	NA	NA	NA	NA	NA	NA	NA	NA
		6	0.7	NA	NA	NA	NA	NA	NA	NA	NA	NA	NA	NA	NA	NA
		7	1.1	NA	NA	NA	NA	NA	NA	NA	NA	NA	NA	NA	NA	NA
		8	3.2	NA	NA	NA	NA	NA	NA	NA	NA	NA	NA	NA	NA	NA
		9	3.0	NA	NA	NA	NA	NA	NA	NA	NA	NA	NA	NA	NA	NA
		10	0.5	NA	NA	NA	NA	NA	NA	NA	NA	NA	NA	NA	NA	NA
		11	0.8	NA	NA	NA	NA	NA	NA	NA	NA	NA	NA	NA	NA	NA
		12	2.2	NA	NA	NA	NA	NA	NA	NA	NA	NA	NA	NA	NA	NA
	2013	1	2.0	NA	NA	NA	NA	NA	NA	NA	NA	NA	NA	NA	NA	NA
		2	1.6	NA	NA	NA	NA	NA	NA	NA	NA	NA	NA	NA	NA	NA
		3	2.5	NA	NA	NA	NA	NA	NA	NA	NA	NA	NA	NA	NA	NA
		4	2.2	NA	NA	NA	NA	NA	NA	NA	NA	NA	NA	NA	NA	NA
2012 Total			21.7	20.1	0.2	0.5	0.1	34.8	0.8	2.5	2.0	0.7	1.1	5.0	13.8	49.9

NA - Landing values not displayed due to confidentiality  
Note landings based on dealer reports but include other vessel-report kept catch and estimate of missing dealer reports.  
Source: NMFS Northeast Regional Office  
Run Date: June, 2013

**Table B. Sector Groundfish Landings by Month**

**Landed Weight in Metric Tons**

FISHING YEAR	YEAR	MONTH	GB Cod	GOM Cod	GB Haddock	GOM Haddock	GB Yellowtail Flounder	SNE/MA Yellowtail Flounder	CC/GOM Yellowtail Flounder	Plaice	Witch Flounder	GB Winter Flounder	GOM Winter Flounder	Redfish	White Hake	Pollock
2010	2010	5	127.7	260.9	1,142.1	19.4	91.0	NA	21.4	30.2	20.1	86.7	7.5	99.6	92.8	81.5
		6	238.1	246.2	1,007.8	9.0	101.0	NA	15.3	95.5	55.2	200.1	1.8	238.9	96.9	235.7
		7	121.6	243.5	354.3	5.1	45.0	NA	8.9	98.4	42.4	204.5	1.8	183.5	99.5	313.4
		8	90.9	289.8	503.4	18.5	45.2	NA	9.9	135.8	47.2	252.5	2.3	165.7	96.0	414.6
		9	121.5	210.1	472.7	10.7	11.7	NA	19.3	140.6	50.4	139.8	2.6	180.7	108.1	440.2
		10	176.8	252.0	315.7	13.6	27.0	NA	22.8	148.1	49.2	152.7	1.1	135.5	129.8	412.7
		11	200.7	315.3	551.6	13.6	32.7	NA	31.6	107.1	39.0	124.6	5.4	77.3	84.7	476.3
		12	230.6	322.2	765.6	10.1	38.4	NA	42.0	142.6	45.9	83.7	8.1	86.3	104.0	424.1
	2011	1	128.2	337.7	455.3	15.8	34.7	NA	63.2	117.3	72.2	19.7	5.7	147.7	160.2	444.2
		2	197.0	161.7	95.1	17.1	11.8	NA	98.8	111.3	75.9	1.3	7.0	207.9	239.5	393.8
		3	232.3	311.6	192.7	170.7	16.4	NA	137.8	120.9	81.0	12.5	35.4	219.5	243.2	584.9
		4	369.3	68.7	1,281.5	18.1	216.0	NA	24.0	76.1	59.3	79.8	0.8	201.1	201.6	500.6
2010 Total			2,234.8	3,019.6	7,137.9	321.8	670.9	139.8	495.1	1,323.8	637.9	1,358.0	79.6	1,943.6	1,656.5	4,721.9
2011	2011	5	280.8	309.0	853.6	28.9	101.8	NA	32.3	43.2	53.3	249.2	13.3	287.0	123.4	536.0
		6	259.3	436.7	806.7	21.8	80.5	NA	28.4	122.7	93.7	291.1	6.0	245.0	132.1	583.2
		7	155.9	349.4	141.6	7.9	65.8	NA	20.5	85.5	53.5	314.0	9.5	154.9	162.8	385.3
		8	202.5	242.6	155.6	10.8	40.2	NA	17.9	100.7	45.8	272.9	10.7	129.5	189.5	451.3
		9	301.7	233.5	142.4	12.6	68.0	NA	38.7	168.0	84.0	208.5	6.5	124.1	204.1	474.2
		10	280.7	305.8	131.0	20.8	94.8	NA	36.3	136.8	72.8	166.9	12.8	83.9	173.8	498.8
		11	164.3	485.1	98.2	31.6	93.7	NA	61.7	140.7	80.9	171.1	13.6	74.2	155.0	724.1
	2012	12	210.4	391.4	256.2	14.3	72.5	NA	79.1	147.6	69.5	82.9	11.7	146.5	190.5	696.3
		1	148.0	242.4	151.0	8.1	75.6	NA	78.2	156.0	93.2	19.3	11.7	168.5	238.1	469.2
		2	137.5	259.6	57.0	166.6	39.3	NA	80.9	118.8	100.5	5.7	20.2	281.5	230.2	497.7
		3	204.7	289.8	72.9	84.1	24.4	NA	165.5	107.0	107.7	12.4	32.0	256.9	232.6	650.6
		4	272.0	59.5	440.8	8.1	181.9	NA	71.5	107.5	74.9	117.8	5.0	565.7	199.8	595.1
2011 Total			2,617.9	3,604.9	3,307.1	415.8	938.7	344.8	710.9	1,434.4	929.8	1,911.8	153.2	2,517.8	2,231.9	6,561.9

## Table B. Sector Groundfish Landings by Month

Landed Weight in Metric Tons

FISHING YEAR	YEAR	MONTH	GB Cod	GOM Cod	GB Haddock	GOM Haddock	GB Yellowtail Flounder	SNE/MA Yellowtail Flounder	CC/GOM Yellowtail Flounder	Plaice	Witch Flounder	GB Winter Flounder	GOM Winter Flounder	Redfish	White Hake	Pollock
2012	2012	5	241.1	84.7	205.0	20.1	6.8	NA	119.4	99.8	65.2	345.6	19.4	483.1	160.6	663.8
		6	147.5	172.0	94.1	12.6	2.9	NA	41.1	121.4	82.2	334.4	8.7	313.1	150.1	638.7
		7	82.2	119.8	63.3	5.1	4.1	NA	24.6	109.6	78.7	294.3	11.9	231.7	139.6	541.0
		8	58.6	138.7	53.3	8.3	18.1	NA	44.0	156.4	77.1	243.1	24.4	331.6	146.9	476.5
		9	54.6	104.2	62.7	10.8	8.8	NA	25.8	144.3	103.8	190.5	14.1	222.7	156.8	354.4
		10	134.1	96.5	46.1	6.4	8.9	NA	75.4	130.2	93.1	149.8	48.1	227.1	149.3	344.4
		11	78.9	409.9	23.7	7.0	21.0	NA	78.8	104.1	59.0	190.0	52.9	164.4	114.3	315.8
		12	130.3	259.9	51.0	6.8	31.5	NA	91.4	106.8	67.8	87.6	25.2	164.0	134.3	317.7
	2013	1	66.9	111.8	62.0	12.0	12.0	NA	117.5	125.9	86.7	2.6	16.9	247.8	146.4	550.3
		2	119.2	63.1	33.5	29.0	2.1	NA	63.2	83.0	57.2	1.2	6.4	216.1	138.3	414.6
		3	52.2	148.4	21.9	47.0	2.5	NA	127.1	98.3	62.8	5.9	15.7	231.3	203.5	432.7
		4	77.4	37.0	91.3	18.7	83.6	NA	27.5	82.0	78.8	81.1	4.6	800.6	158.9	478.8
2012 Total			1,243.2	1,745.8	807.9	183.6	202.3	379.6	835.8	1,361.9	912.5	1,926.1	248.5	3,633.5	1,798.9	5,528.7

NA - Landing values not displayed due to confidentiality

Note landings based on dealer reports but include other vessel-report kept catch and estimate of missing dealer reports.

Source: NMFS Northeast Regional Office

Run Date: June, 2013

9/11/2013

# Table C. Eastern Georges Bank Cod/Haddock Landings by Month

			Landed Weight in Metric Tons						
			GB Cod East			GB Haddock East			
FISHING_YEAR	YEAR	MONTH	COMMON_POOL	SECTOR	TOTAL	COMMON_POOL	SECTOR	TOTAL	
2010	2010	5	NA	23.2	23.2	NA	46.7	46.7	
		6	NA	37.8	37.8	NA	54.8	54.8	
		7	NA	2.6	2.6	NA	13.9	13.9	
		8	NA	8.2	8.2	NA	362.0	362.0	
		9	NA	6.8	6.8	NA	203.4	203.4	
		10	NA	8.3	8.3	NA	202.9	202.9	
		11	NA	9.6	9.6	NA	182.3	182.3	
		12	NA	13.4	13.4	NA	131.4	131.4	
	2011	1	NA	6.0	6.0	NA	37.4	37.4	
		2	NA	2.8	2.8	NA	61.8	61.8	
		3	NA	5.9	5.9	NA	97.9	97.9	
		4	NA	81.6	81.6	NA	231.8	231.8	
	2010 Total			0.0	206.1	206.1	0.0	1626.3	1626.3
	2011	2011	5	NA	27.7	27.7	NA	203.7	203.7
			6	NA	36.2	36.2	NA	137.8	137.8
			7	NA	18.7	18.7	NA	61.7	61.7
8			NA	2.0	2.0	NA	103.4	103.4	
9			NA	0.9	0.9	NA	34.2	34.2	
10			NA	1.1	1.1	NA	30.8	30.8	
11			NA	1.9	1.9	NA	39.3	39.3	
12			NA	2.1	2.1	NA	99.1	99.1	
2012		1	NA	1.6	1.6	NA	46.6	46.6	
		2	NA	0.3	0.3	NA	5.4	5.4	
		3	NA	2.3	2.3	NA	27.2	27.2	
		4	NA	15.4	16.9	NA	105.8	105.8	
2011 Total			1.5	110.2	111.7	0.0	895.0	895.0	
2012		2012	5	NA	3.3	3.3	NA	69.4	69.4
			6	NA	3.9	3.9	NA	40.4	40.4
			7	NA	1.9	1.9	NA	16.8	16.8
	8		NA	0.6	0.6	NA	4.3	4.3	
	9		NA	0.8	0.8	NA	16.3	16.3	
	10		NA	0.4	0.4	NA	15.0	15.0	
	11		NA	1.8	1.8	NA	4.3	4.3	
	12		NA	3.2	3.2	NA	14.0	14.0	
	2013	1	NA	0.6	0.6	NA	27.0	27.0	
		2	NA	0.4	0.4	NA	3.3	3.3	
		3	NA	0.9	0.9	NA	11.2	11.3	
		4	NA	13.8	13.8	NA	30.3	30.3	
	2012 Total			0.0	31.6	31.7	0.0	252.3	252.4

NA - Landing values not displayed due to confidentiality

Note landings based on dealer reports but include other vessel-report kept catch and estimate of missing dealer reports.

Source: NMFS Northeast Regional Office

Run Date: June, 2013

9/11/2013