

## **Summary Tables for FY 2014 Northeast Multispecies Fishery**

These summary tables were produced by NOAA Fisheries Service's Greater Atlantic Regional Fisheries Office. The summary tables compare data for the full twelve months of the Northeast Multispecies fishing year (May-April) for fishing years 2010 through 2014. These tables, as well as additional data and analysis, will be presented in the 2014 Final Report on the Performance of the Northeast Multispecies (Groundfish) Fishery (May 2014 - April 2015), to be produced and released by NOAA's Northeast Fisheries Science Center's Social Science Branch in Spring 2016. The FY2014 Final Report may be viewed on the NEFSC's Social Sciences Branch homepage.

Note throughout this report "Trips" refer to commercial trips sailing under a federal limited access groundfish permit. Landings are in landed weight unless otherwise specified. Groundfish trips include estimates of missing dealer report data.

Unless otherwise indicated this report is based on active vessels, which are vessels that received revenue from any species on any trip while fishing under a federal limited access groundfish permit.

Note that in tables with vessel counts, sector and common pool counts or home state counts may exceed the total vessel count because vessels may switch between sector and common pool eligibilities or home ports during the fishing year.

Data may be grouped or display "NA" due to data confidentiality.

These data are the best available to NOAA's National Marine Fisheries Service (NMFS). Data sources for this report include: (1) Vessels via VMS; (2) Vessels via vessel logbook reports; (3) Dealers via Dealer Electronic reporting. Differences with previous reports are due to corrections made to the database.

### **List of Tables**

Table 1. Summary of major trends – includes all vessels with a valid limited access multispecies permit.

Table 2 – Total landings and revenue from all trips in 2010 dollars.

Table 3 – Total landings and revenue from groundfish trips in 2010 dollars.

Table 4 – Value of landings of all species by state and port of landing in 2010 dollars (all trips)

Table 5 – Value of landings of all species by home state and home port in 2010 dollars (all trips)

Table 6 – Value of landings of groundfish by state and port of landing in 2010 dollars (all trips)

Table 7 – Value of landings of groundfish by home state and home port in 2010 dollars (all trips)

Table 8 – Value and landed pounds of nine allocated groundfish species landed by limited access groundfish vessels in 2010 dollars

Table 9 – Value and landed pounds of top ten non-groundfish species landed by limited access groundfish vessels in 2010 dollars

Table 10 – Number of vessels by fishing year

Tables 11 and 12 - Numbers of vessels with revenue from any species (all trips) and from at least one groundfish trip, respectively, by home port state.

Tables 13 and 14 - Numbers of vessels with revenue from any species (all trips) and from at least one groundfish trip, respectively, by vessel size.

Table 15 – Effort by active vessels (by size category) . Shows the number of groundfish and non-groundfish trips, with days absent and average trip length.

Table 16 – Average revenue per vessel in 2010 dollars (by size category). Shows the average revenue per vessel and number of active vessels on groundfish trips and non-groundfish trips.

Table 31 - Sector stock-level catch, ACE and utilization.

Tables 34 and 35 - Distributions of revenue from all species and from groundfish, respectively, among vessels.

Tables 38b and 39b - Numbers of vessels with revenue from all species and from groundfish, respectively, by cumulative quartiles.

Table 40 – Changes in employment indicators by vessel size category.

Table 41 – Changes in employment by home state. Shows total number of crew positions, crew trips, crew days, and crew day/crew trip.

### **List of Figures**

Figure 1. Yearly average price (in 2010 dollars) of combined groundfish vs. other species

Figure 2. Yearly average price (in 2010 dollars) by allocated groundfish species.

March 31, 2016

**Table 1. Summary of major trends (May through April, all vessels with a valid limited access multispecies permit)**

	2010			2011		
	Total	Sector Vessels	Common Pool	Total	Sector Vessels	Common Pool
Groundfish gross revenue (in 2010 dollars)	\$83,349,307	\$81,286,822	\$2,062,485	\$88,876,767	\$88,036,868	\$839,899
Non-groundfish gross revenue (in 2010 dollars)	\$212,222,869	\$116,194,522	\$96,028,347	\$236,709,451	\$142,065,183	\$94,644,268
Total gross revenue (in 2010 dollars)	\$295,572,176	\$197,481,344	\$98,090,832	\$325,586,218	\$230,102,050	\$95,484,167
Groundfish average price (in 2010 dollars)	\$1.43/lb	\$1.42/lb	\$1.58/lb	\$1.43/lb	\$1.43/lb	\$1.57/lb
Non-groundfish average price (in 2010 dollars)	\$1.19/lb	\$1.17/lb	\$1.22/lb	\$1.12/lb	\$1.12/lb	\$1.12/lb
Number of active vessels	857	436	421	778	445	336
Number of active vessels that landed GF*	393	293	100	365	290	76
Number of groundfish trips	13,540	11,243	2,297	16,069	13,796	2,273
Number of non-groundfish trips	38,668	16,595	22,073	33,650	16,775	16,875
Number of days absent on groundfish trips	18,521	16,916	1,605	21,825	20,317	1,508
Number of days absent on non-groundfish trips	31,406	16,025	15,382	27,947	15,436	12,511
Total Crew Positions	2,270			2,176		
Total Crew-trips	124,451			122,449		
Total Crew-days	170,519			170,635		

\*This refers to vessels that landed allocated groundfish from at least one groundfish trip.

**Table 1 (continued).**

	<b>2012</b>			<b>2013</b>		
	<b>Total</b>	<b>Sector Vessels</b>	<b>Common Pool</b>	<b>Total</b>	<b>Sector Vessels</b>	<b>Common Pool</b>
<b>Groundfish gross revenue (in 2010 dollars)</b>	\$67,735,338	\$67,136,982	\$598,356	\$55,117,761	\$54,144,096	\$973,665
<b>Non-groundfish gross revenue (in 2010 dollars)</b>	\$227,571,729	\$135,409,474	\$92,162,255	\$211,409,693	\$128,788,320	\$82,621,374
<b>Total gross revenue (in 2010 dollars)</b>	\$295,307,067	\$202,546,456	\$92,760,611	\$266,527,454	\$182,932,415	\$83,595,039
<b>Groundfish average price (in 2010 dollars)</b>	\$1.43/lb	\$1.43/lb	\$1.69/lb	\$1.30/lb	\$1.30/lb	\$1.53/lb
<b>Non-groundfish average price (in 2010 dollars)</b>	\$1.07/lb	\$1.04/lb	\$1.13/lb	\$1.05/lb	\$0.98/lb	\$1.19/lb
<b>Number of active vessels</b>	760	444	318	734	419	315
<b>Number of active vessels that landed GF*</b>	349	285	65	311	231	80
<b>Number of groundfish trips</b>	14,607	12,972	1,635	10,699	9,166	1,533
<b>Number of non-groundfish trips</b>	32,706	17,180	15,526	32,766	17,941	14,825
<b>Number of days absent on groundfish trips</b>	20,062	18,997	1,065	17,431	16,378	1,053
<b>Number of days absent on non-groundfish trips</b>	28,868	16,293	12,575	29,123	16,951	12,172
<b>Total Crew Positions</b>	2,141			2,040		
<b>Total Crew-trips</b>	117,228			106,969		
<b>Total Crew-days</b>	168,930			157,990		

\*This refers to vessels that landed allocated groundfish from at least one groundfish trip.

**Table 1 (continued).**

	<b>2014</b>		
	<b>Total</b>	<b>Sector Vessels</b>	<b>Common Pool</b>
<b>Groundfish gross revenue (in 2010 dollars)</b>	\$55,533,512 (\$59,968,934)**	\$54,702,812 (\$59,072,003)**	\$830,701 (\$896,931)**
<b>Non-groundfish gross revenue (in 2010 dollars)</b>	\$210,759,922 (\$227,551,522)**	\$126,336,824 (\$136,407,732)**	\$84,423,098 (\$91,143,789)**
<b>Total gross revenue (in 2010 dollars)</b>	\$266,293,434 (\$287,520,456)**	\$181,039,636 (\$195,479,736)**	\$85,253,798 (\$92,040,720)**
<b>Groundfish average price (in 2010 dollars)</b>	\$1.28/lb (\$1.38)***	\$1.28/lb (\$1.38)***	\$1.67/lb (\$1.81)***
<b>Non-groundfish average price (in 2010 dollars)</b>	\$1.04/lb (\$1.13)***	\$0.99/lb (\$1.07)***	\$1.14/lb (\$1.23)***
<b>Number of active vessels</b>	717	405	313
<b>Number of active vessels that landed GF*</b>	273	217	56
<b>Number of groundfish trips</b>	9,850	8,698	1,152
<b>Number of non-groundfish trips</b>	31,976	16,350	15,626
<b>Number of days absent on groundfish trips</b>	16,784	15,937	848
<b>Number of days absent on non-groundfish trips</b>	27,658	15,636	12,022
<b>Total Crew Positions</b>	2,010		
<b>Total Crew-trips</b>	102,563		
<b>Total Crew-days</b>	150,753		

\*This refers to vessels that landed allocated groundfish from at least one groundfish trip.

\*\*Nominal gross revenue observed during Fishing Year 2014

\*\*\*Nominal average price during Fishing Year 2014

**Table 2. Total landings and revenue from all trips by fishing year in 2010 dollars (May through April)**

	2010			2011			2012		
Landed pounds	Total	Sector Vessels	Common Pool	Total	Sector Vessels	Common Pool	Total	Sector Vessels	Common Pool
Groundfish	58,376,025	57,072,960	1,303,065	62,199,462	61,663,692	535,769	47,424,184	47,070,159	354,025
Non-groundfish	177,858,315	98,983,312	78,875,003	211,687,965	127,357,023	84,330,942	212,086,306	130,497,290	81,589,016
Grand Total	236,234,341	156,056,272	80,178,069	273,887,426	189,020,715	84,866,711	259,510,490	177,567,449	81,943,041
Gross revenue									
Groundfish	\$83,349,307	\$81,286,822	\$2,062,485	\$88,876,767	\$88,036,868	\$839,899	\$67,735,338	\$67,136,982	\$598,356
Non-groundfish	\$212,222,869	\$116,194,522	\$96,028,347	\$236,709,451	\$142,065,183	\$94,644,268	\$227,571,729	\$135,409,474	\$92,162,255
Total Revenue	\$295,572,176	\$197,481,344	\$98,090,832	\$325,586,218	\$230,102,050	\$95,484,167	\$295,307,067	\$202,546,456	\$92,760,611

**Table 3. Total landings and revenue from groundfish trips by fishing year in 2010 dollars (May through April)**

	2010			2011			2012		
Landed pounds	Total	Sector Vessels	Common Pool	Total	Sector Vessels	Common Pool	Total	Sector Vessels	Common Pool
Groundfish	58,264,898	56,969,750	1,295,148	62,058,041	61,569,524	488,516	47,366,270	47,031,526	334,744
Non-groundfish	23,583,639	18,687,202	4,896,437	28,990,164	23,921,022	5,069,142	28,053,234	24,201,366	3,851,868
Grand Total	81,848,538	75,656,952	6,191,586	91,048,205	85,490,546	5,557,658	75,419,504	71,232,892	4,186,612
Gross revenue									
Groundfish	\$83,134,475	\$81,083,282	\$2,051,193	\$88,663,998	\$87,886,049	\$777,949	\$67,624,981	\$67,059,014	\$565,967
Non-groundfish	\$23,428,284	\$18,920,409	\$4,507,875	\$32,213,528	\$26,525,113	\$5,688,415	\$26,015,100	\$22,016,366	\$3,998,734
Total Revenue	\$106,562,760	\$100,003,691	\$6,559,069	\$120,877,526	\$114,411,162	\$6,466,364	\$93,640,081	\$89,075,380	\$4,564,701

**Table 2 (continued).**

	<b>2013</b>			<b>2014</b>		
<b>Landed pounds</b>	<b>Total</b>	<b>Sector Vessels</b>	<b>Common Pool</b>	<b>Total</b>	<b>Sector Vessels</b>	<b>Common Pool</b>
<b>Groundfish</b>	42,286,097	41,649,087	637,010	43,357,534	42,860,951	496,583
<b>Non-groundfish</b>	201,393,759	131,703,921	69,689,839	202,100,345	127,964,530	74,135,815
<b>Grand Total</b>	243,679,856	173,353,007	70,326,848	245,457,879	170,825,481	74,632,398
<b>Gross revenue</b>						
<b>Groundfish</b>	\$55,117,761	\$54,144,096	\$973,665	\$55,533,512 (\$59,968,934)*	\$54,702,812 (\$59,072,003)*	\$830,701 (\$896,931)*
<b>Non-groundfish</b>	\$211,409,693	\$128,788,320	\$82,621,374	\$210,759,922 (\$227,551,522)*	\$126,336,824 (\$136,407,732)*	\$84,423,098 (\$91,143,789)*
<b>Total Revenue</b>	\$266,527,454	\$182,932,415	\$83,595,039	\$266,293,434 (\$287,520,456)*	\$181,039,636 (\$195,479,736)*	\$85,253,798 (\$92,040,720)*

\* Nominal revenue observed during Fishing Year 2014

**Table 3 (continued).**

	<b>2013</b>			<b>2014</b>		
<b>Landed pounds</b>	<b>Total</b>	<b>Sector Vessels</b>	<b>Common Pool</b>	<b>Total</b>	<b>Sector Vessels</b>	<b>Common Pool</b>
<b>Groundfish</b>	42,148,212	41,557,317	590,895	43,220,719	42,732,641	488,078
<b>Non-groundfish</b>	20,901,441	17,385,569	3,515,872	25,786,666	22,925,085	2,861,580
<b>Grand Total</b>	63,049,652	58,942,886	4,106,766	69,007,385	65,657,726	3,349,659
<b>Gross revenue</b>						
<b>Groundfish</b>	\$54,922,673	\$53,977,000	\$945,673	\$55,372,711 (\$59,794,967)*	\$54,565,682 (\$58,923,592)*	\$807,029 (\$871,375)*
<b>Non-groundfish</b>	\$22,352,385	\$19,122,389	\$3,229,996	\$26,163,996 (\$28,259,654)*	\$23,599,382 (\$25,495,553)*	\$2,564,614 (\$2,764,101)*
<b>Total Revenue</b>	\$77,275,059	\$73,099,389	\$4,175,669	\$81,536,707 (\$88,054,621)*	\$78,165,064 (\$84,419,145)*	\$3,371,643 (\$3,635,476)*

\* Nominal revenue observed during Fishing Year 2014

**Table 4. Value of landings of all species by state and port of landing in 2010 dollars (May through April, all trips).**

		Year				
		2010	2011	2012	2013	2014
<b>CT</b>		\$4,408,148	\$6,293,634	\$8,217,949	\$7,030,815	\$10,185,685
<b>MA</b>		\$174,479,014	\$189,636,599	\$170,855,377	\$147,664,635	\$142,440,484
	BOSTON	\$14,205,070	\$14,799,345	\$13,266,044	\$12,521,327	\$13,180,576
	CHATHAM	\$7,479,022	\$9,071,412	\$7,151,845	\$7,222,769	\$11,654,726
	GLOUCESTER	\$39,922,100	\$42,106,971	\$31,154,025	\$24,932,707	\$25,644,268
	NEW BEDFORD	\$95,448,246	\$107,085,491	\$100,890,431	\$87,032,124	\$73,931,311
<b>ME</b>		\$18,631,328	\$18,659,139	\$19,819,199	\$20,030,274	\$23,200,531
	PORTLAND	\$6,283,649	\$7,426,192	\$8,590,255	\$8,780,853	\$9,544,307
<b>NH</b>		\$6,781,660	\$6,998,661	\$6,314,008	\$4,698,947	\$4,201,082
<b>NJ</b>		\$25,059,664	\$28,413,137	\$24,185,283	\$20,599,183	\$19,617,135
<b>NY</b>		\$21,522,805	\$24,216,725	\$19,776,380	\$18,161,234	\$17,462,766
<b>RI</b>		\$30,892,773	\$36,366,440	\$32,380,219	\$36,829,472	\$34,993,871
	POINT JUDITH	\$22,303,288	\$27,571,749	\$23,708,350	\$28,620,900	\$27,907,216
<b>Other northeast</b>		\$13,796,784	\$15,001,882	\$13,758,651	\$11,512,894	\$14,191,879
<b>Grand total</b>		<b>\$295,572,176</b>	<b>\$325,586,218</b>	<b>\$295,307,067</b>	<b>\$266,527,454</b>	<b>\$266,293,434</b>



**Table 5. Value of landings of all species by home port state and home port in 2010 dollars (May through April, all trips).**

		Year				
		2010	2011	2012	2013	2014
<b>CT</b>		\$5,677,322	\$5,154,046	\$8,388,410	\$6,987,640	\$8,677,607
<b>MA</b>		\$149,936,228	\$165,641,241	\$145,684,104	\$127,253,687	\$127,532,375
	BOSTON	\$28,081,646	\$30,969,456	\$26,380,843	\$25,023,062	\$27,542,675
	CHATHAM	\$6,501,632	\$8,804,932	\$6,597,460	\$7,120,430	\$11,187,357
	GLOUCESTER	\$24,976,484	\$25,859,769	\$21,566,504	\$17,024,534	\$18,217,364
	NEW BEDFORD	\$64,821,492	\$76,434,780	\$67,820,979	\$57,967,495	\$49,078,351
<b>ME</b>		\$31,099,411	\$29,086,499	\$28,007,302	\$27,007,827	\$27,722,255
	PORTLAND	\$12,895,068	\$12,703,440	\$12,215,958	\$12,891,048	\$12,524,528
<b>NH</b>		\$7,523,555	\$8,806,620	\$7,668,919	\$5,580,229	\$4,866,899
<b>NJ</b>		\$21,032,419	\$24,448,046	\$23,227,468	\$21,387,919	\$20,625,769
<b>NY</b>		\$27,447,134	\$31,694,319	\$27,154,666	\$24,105,581	\$26,617,205
<b>RI</b>		\$35,345,995	\$40,817,685	\$35,742,386	\$37,136,607	\$33,617,346
	POINT JUDITH	\$23,003,508	\$27,867,192	\$24,849,499	\$26,034,115	\$23,352,666
<b>Other northeast</b>		\$17,510,113	\$19,937,763	\$19,433,813	\$17,067,965	\$16,633,979
<b>Grand total</b>		<b>\$295,572,176</b>	<b>\$325,586,218</b>	<b>\$295,307,067</b>	<b>\$266,527,454</b>	<b>\$266,293,434</b>

**Table 6. Value of landings of groundfish by state and port of landing in 2010 dollars (May through April, all trips).**

		Year				
		2010	2011	2012	2013	2014
<b>CT</b>		\$13,142	\$45,041	\$85,046	\$188,585	\$67,043
<b>MA</b>		\$73,711,652	\$76,720,530	\$55,439,127	\$44,507,892	\$45,517,567
	BOSTON	\$11,629,341	\$12,072,010	\$11,108,696	\$9,704,262	\$10,546,852
	CHATHAM	\$2,170,496	\$2,346,935	\$960,820	\$727,054	\$492,636
	GLOUCESTER	\$27,680,219	\$29,272,469	\$20,528,580	\$14,480,710	\$13,987,345
	NEW BEDFORD	\$29,602,712	\$29,891,536	\$20,816,175	\$18,487,562	\$19,785,912
<b>ME</b>		\$4,323,940	\$5,883,746	\$6,924,688	\$5,720,062	\$6,479,294
	PORTLAND	\$3,421,287	\$4,764,792	\$5,959,659	\$5,329,611	\$6,038,077
<b>NH</b>		\$3,253,640	\$4,174,076	\$3,266,221	\$1,944,710	\$1,373,789
<b>NJ</b>		\$24,250	\$19,529	\$29,596	\$110,114	\$20,115
<b>NY</b>		\$249,843	\$78,295	\$200,994	\$403,657	\$298,292
<b>RI</b>		\$1,760,507	\$1,951,727	\$1,785,974	\$2,218,737	\$1,776,441
	POINT JUDITH	\$1,658,790	\$1,883,578	\$1,676,172	\$2,161,196	\$1,763,665
<b>Other northeast</b>		\$12,332	\$3,823	\$3,694	\$24,004	\$972
<b>Grand Total</b>		<b>\$83,349,307</b>	<b>\$88,876,767</b>	<b>\$67,735,338</b>	<b>\$55,117,761</b>	<b>\$55,533,512</b>

**Table 7. Value of landings of groundfish by home port state and home port in 2010 dollars (May through April, all trips).**

		Year				
		2010	2011	2012	2013	2014
<b>CT</b>		\$54,997	\$46,222	\$14,304	\$88,949	\$35,388
<b>MA</b>		\$59,589,776	\$64,727,489	\$47,140,669	\$37,169,796	\$39,040,537
	BOSTON	\$14,549,475	\$16,964,683	\$12,603,322	\$10,635,060	\$12,759,459
	CHATHAM	\$2,374,690	\$2,506,372	\$907,489	\$760,337	\$489,559
	GLOUCESTER	\$16,717,497	\$16,669,717	\$13,608,804	\$9,382,530	\$9,514,361
	NEW BEDFORD	\$18,539,572	\$20,660,118	\$14,889,044	\$12,707,237	\$13,511,655
<b>ME</b>		\$14,779,571	\$14,937,976	\$13,906,508	\$12,091,390	\$11,662,258
	PORTLAND	\$10,515,779	\$10,086,317	\$9,314,501	\$9,746,559	\$9,348,986
<b>NH</b>		\$3,687,290	\$4,507,543	\$3,400,057	\$2,333,334	\$1,986,675
<b>NJ</b>		\$308,598	\$119,348	\$51,471	\$127,938	\$55,191
<b>NY</b>		\$1,086,490	\$1,361,489	\$690,238	\$820,970	\$718,129
<b>RI</b>		\$3,288,495	\$2,814,862	\$2,410,815	\$2,484,386	\$1,989,245
	POINT JUDITH	\$2,375,803	\$1,973,892	\$1,785,137	\$1,947,275	\$1,489,998
<b>Other Northeast</b>		\$554,090	\$361,836	\$121,277	\$999	\$46,089
<b>Grand Total</b>		<b>\$83,349,307</b>	<b>\$88,876,767</b>	<b>\$67,735,338</b>	<b>\$55,117,761</b>	<b>\$55,533,512</b>

**Table 8. Value and landed pounds of nine allocated groundfish species\* landed by limited access groundfish vessels in 2010 dollars (May through April, all trips).**

	2010			2011			2012		
	Total	Sector Vessels	Common Pool	Total	Sector Vessels	Common Pool	Total	Sector Vessels	Common Pool
<b>COD</b>	\$26,587,164	\$25,553,394	\$1,033,770	\$30,334,648	\$29,790,342	\$544,306	\$16,152,386	\$15,900,983	\$251,403
<b>(GADUS MORHUA)</b>	12,191,163	11,702,677	488,486	14,087,038	13,831,556	255,482	6,711,403	6,619,551	91,852
<b>HADDOCK</b>	\$20,821,540	\$20,637,278	\$184,262	\$13,723,855	\$13,686,159	\$37,696	\$5,041,676	\$5,013,615	\$28,061
<b>(MELANOGRAMMUS AEGLEFINUS)</b>	16,692,735	16,501,949	190,786	8,349,578	8,313,730	35,848	2,206,410	2,191,370	15,040
<b>POLLOCK</b>	\$10,057,714	\$9,785,329	\$272,385	\$12,771,675	\$12,687,050	\$84,625	\$12,194,958	\$12,090,357	\$104,601
<b>(POLLACHIUS VIRENS)</b>	10,734,362	10,458,270	276,092	14,659,300	14,556,814	102,486	12,353,965	12,249,118	104,848
<b>FLOUNDER, WINTER</b>	\$6,557,105	\$6,423,015	\$134,090	\$7,980,765	\$7,961,447	\$19,318	\$9,109,853	\$9,101,658	\$8,195
<b>(PLEURONECTES AMERICANUS)</b>	3,258,968	3,191,265	67,703	4,581,930	4,565,529	16,401	4,810,732	4,806,027	4,705
<b>HAKE, WHITE</b>	\$4,925,429	\$4,833,287	\$92,143	\$6,088,236	\$6,054,581	\$33,655	\$6,665,818	\$6,612,388	\$53,430
<b>(UROPHYCIS TENUIS)</b>	3,734,129	3,665,204	68,925	4,988,877	4,958,050	30,827	4,008,400	3,977,391	31,009
<b>FLOUNDER, AM. PLAICE</b>	\$4,363,017	\$4,302,314	\$60,703	\$4,440,314	\$4,428,453	\$11,861	\$4,757,928	\$4,748,431	\$9,498
<b>(HIPPOGLOSSOIDES PLATESSOIDES)</b>	2,981,725	2,932,799	48,926	3,208,844	3,198,036	10,808	3,009,953	3,004,379	5,574
<b>REDFISH</b>	\$2,519,870	\$2,508,708	\$11,162	\$3,706,490	\$3,701,390	\$5,099	\$5,210,785	\$5,201,841	\$8,944
<b>(SEBASTES SP)</b>	4,307,744	4,292,983	14,761	5,635,609	5,628,449	7,160	9,036,695	9,025,030	11,665
<b>FLOUNDER, YELLOWTAIL</b>	\$3,852,622	\$3,731,175	\$121,447	\$5,659,359	\$5,593,587	\$65,772	\$4,621,593	\$4,499,665	\$121,928
<b>(PLEURONECTES FERRUGINEUS)</b>	2,989,001	2,903,034	85,967	4,570,151	4,515,078	55,073	3,240,119	3,156,378	83,741
<b>FLOUNDER, WITCH</b>	\$3,571,057	\$3,423,642	\$147,415	\$4,003,183	\$3,980,308	\$22,875	\$3,804,353	\$3,794,337	\$10,016
<b>(GLYPTOCEPHALUS CYNOGLOSSUS)</b>	1,468,363	1,410,953	57,409	2,086,531	2,076,125	10,406	2,021,642	2,017,083	4,559

\* Sorted descending by average value over five years.

Table 8 (continued).

	2013			2014		
	Total	Sector Vessels	Common Pool	Total	Sector Vessels	Common Pool
<b>COD</b>	\$8,962,067	\$8,795,999	\$166,068	\$7,549,284	\$7,405,709	\$143,575
<b>(GADUS MORHUA)</b>	4,255,591	4,187,124	68,467	3,781,016	3,723,427	57,589
<b>HADDOCK</b>	\$7,334,939	\$7,304,993	\$29,946	\$12,057,180	\$12,046,217	\$10,963
<b>(MELANOGRAMMUS AEGLEFINUS)</b>	5,539,859	5,494,562	45,297	10,192,588	10,183,972	8,616
<b>POLLOCK</b>	\$10,068,082	\$10,024,210	\$43,873	\$9,199,956	\$9,094,647	\$105,310
<b>(POLLACHIUS VIRENS)</b>	9,345,421	9,310,801	34,620	7,572,783	7,496,199	76,584
<b>FLOUNDER, WINTER</b>	\$9,194,187	\$8,821,085	\$373,101	\$7,187,170	\$6,959,263	\$227,907
<b>(PLEURONECTES AMERICANUS)</b>	5,906,021	5,654,393	251,628	3,993,881	3,871,618	122,263
<b>HAKE, WHITE</b>	\$5,474,802	\$5,457,879	\$16,923	\$5,176,243	\$5,150,889	\$25,354
<b>(UROPHYCIS TENUIS)</b>	3,342,399	3,333,131	9,268	2,844,493	2,832,290	12,203
<b>FLOUNDER, AM. PLAICE</b>	\$4,303,952	\$4,295,733	\$8,219	\$4,430,346	\$4,404,318	\$26,028
<b>(HIPPOGLOSSOIDES PLATESSOIDES)</b>	2,845,475	2,839,386	6,089	2,696,178	2,679,205	16,973
<b>REDFISH</b>	\$4,009,564	\$4,004,681	\$4,883	\$5,004,767	\$5,000,731	\$4,036
<b>(SEBASTES SP)</b>	7,979,426	7,971,492	7,934	9,678,344	9,671,931	6,413
<b>FLOUNDER, YELLOWTAIL</b>	\$2,536,801	\$2,224,449	\$312,352	\$2,052,075	\$1,774,122	\$277,953
<b>(PLEURONECTES FERRUGINEUS)</b>	1,714,215	1,507,460	206,755	1,515,556	1,322,688	192,868
<b>FLOUNDER, WITCH</b>	\$3,035,433	\$3,019,353	\$16,081	\$2,584,286	\$2,577,782	\$6,505
<b>(GLYPTOCEPHALUS CYNOGLOSSUS)</b>	1,330,740	1,324,362	6,378	1,044,552	1,041,965	2,587

\* Sorted descending by average value over five years.

**Table 9. Value and landed pounds of top ten non-groundfish species\* landed by limited access groundfish vessels in 2010 dollars (May through April).**

	2010			2011			2012		
	Total	Sector Vessels	Common Pool	Total	Sector Vessels	Common Pool	Total	Sector Vessels	Common Pool
<b>SCALLOP, SEA</b>	\$71,120,163	\$33,888,036	\$37,232,127	\$87,089,180	\$46,499,280	\$40,589,900	\$85,896,728	\$47,416,881	\$38,479,848
<b>(PATINOPECTEN, PLACOPECTEN SP)</b>	8,324,090	4,004,589	4,319,501	8,932,936	4,762,734	4,170,202	8,931,539	4,965,509	3,966,030
<b>LOBSTER</b>	\$33,674,035	\$13,354,700	\$20,319,335	\$28,811,665	\$15,942,714	\$12,868,951	\$30,594,953	\$14,730,043	\$15,864,910
<b>(HOMARUS AMERICANUS)</b>	8,737,877	3,589,954	5,147,923	7,527,139	4,306,845	3,220,294	8,753,516	4,649,581	4,103,935
<b>SQUID (LOLIGO)</b>	\$17,989,443	\$15,712,152	\$2,277,291	\$19,582,879	\$14,983,629	\$4,599,250	\$22,406,035	\$17,746,190	\$4,659,845
<b>(LOLIGO PEALEI)</b>	16,484,179	14,474,486	2,009,693	15,621,949	12,113,751	3,508,198	21,179,493	16,697,923	4,481,570
<b>FLOUNDER, SUMMER</b>	\$16,305,573	\$9,247,298	\$7,058,274	\$17,243,500	\$10,631,444	\$6,612,055	\$16,871,104	\$11,278,206	\$5,592,898
<b>(PARALICHTHYS DENTATUS)</b>	8,614,446	5,108,753	3,505,693	7,920,828	4,987,290	2,933,538	7,168,927	4,889,658	2,279,269
<b>ANGLER</b>	\$16,168,685	\$11,481,243	\$4,687,442	\$22,139,805	\$16,194,990	\$5,944,815	\$15,308,953	\$11,545,090	\$3,763,863
<b>(LOPHIUS AMERICANUS)</b>	6,656,757	4,043,498	2,613,259	8,582,917	5,470,876	3,112,042	7,173,592	5,064,225	2,109,367
<b>HAKE, SILVER</b>	\$11,090,695	\$8,529,123	\$2,561,573	\$10,664,857	\$7,992,904	\$2,671,953	\$9,286,866	\$7,060,037	\$2,226,830
<b>(MERLUCCIIUS BILINEARIS)</b>	17,461,018	13,740,362	3,720,656	16,469,943	13,023,495	3,446,448	14,567,410	11,451,832	3,115,578
<b>HERRING, ATLANTIC</b>	\$3,241,808	\$1,343,968	\$1,897,840	\$6,274,147	\$2,777,780	\$3,496,367	\$6,955,231	\$2,965,661	\$3,989,569
<b>(CLUPEA HARENGUS)</b>	25,593,281	10,228,315	15,364,966	55,336,027	20,814,782	34,521,245	55,286,970	22,271,914	33,015,056
<b>SCUP</b>	\$4,723,595	\$3,307,115	\$1,416,480	\$6,770,084	\$5,231,806	\$1,538,278	\$6,156,194	\$4,667,344	\$1,488,850
<b>(STENOTOMUS CHRYSOPS)</b>	7,921,889	5,343,713	2,578,175	10,533,367	8,193,969	2,339,398	11,464,344	9,054,291	2,410,053
<b>SKATES(RACK)</b>	\$4,950,799	\$3,616,071	\$1,334,728	\$6,604,551	\$4,903,575	\$1,700,976	\$5,005,552	\$3,661,427	\$1,344,125
<b>(RAJIDAE)</b>	18,076,163	12,482,952	5,593,211	20,045,152	14,288,999	5,756,154	17,630,711	12,863,739	4,766,973
<b>CRAB, JONAH</b>	\$2,583,800	\$102,660	\$2,481,140	\$2,289,708	\$98,139	\$2,191,569	\$4,123,758	\$664,553	\$3,459,205
<b>(CANCER BOREALIS)</b>	4,623,896	194,391	4,429,505	3,380,427	153,245	3,227,182	6,051,076	960,697	5,090,379

\* Sorted descending by average value over five years.

Table 9 (continued).

	2013			2014		
	Total	Sector Vessels	Common Pool	Total	Sector Vessels	Common Pool
<b>SCALLOP, SEA</b> <b>(PATINOPECTEN, PLACOPECTEN SP)</b>	\$72,491,981	\$41,775,480	\$30,716,501	\$58,570,377	\$34,843,464	\$23,726,912
	6,560,839	3,811,807	2,749,032	4,998,868	2,982,298	2,016,570
<b>LOBSTER</b> <b>(HOMARUS AMERICANUS)</b>	\$32,481,760	\$16,003,487	\$16,478,273	\$36,495,322	\$19,216,987	\$17,278,334
	8,752,405	4,678,002	4,074,403	8,866,269	4,905,449	3,960,820
<b>SQUID (LOLIGO)</b> <b>(LOLIGO PEALEI)</b>	\$23,808,538	\$19,306,891	\$4,501,647	\$19,449,317	\$15,704,318	\$3,744,999
	23,825,826	19,649,665	4,176,161	21,100,261	17,219,000	3,881,261
<b>FLOUNDER, SUMMER</b> <b>(PARALICHTHYS DENTATUS)</b>	\$15,607,368	\$10,579,922	\$5,027,446	\$17,204,390	\$10,976,577	\$6,227,813
	6,239,308	4,288,154	1,951,154	6,144,495	3,944,315	2,200,180
<b>ANGLER</b> <b>(LOPHIUS AMERICANUS)</b>	\$13,076,754	\$10,300,635	\$2,776,119	\$13,800,874	\$10,424,110	\$3,376,764
	6,749,248	4,839,748	1,909,501	7,411,179	5,113,349	2,297,830
<b>HAKE, SILVER</b> <b>(MERLUCCIIUS BILINEARIS)</b>	\$8,488,946	\$6,032,815	\$2,456,132	\$11,072,452	\$8,190,877	\$2,881,575
	14,270,181	10,690,064	3,580,117	16,359,483	12,212,340	4,147,143
<b>HERRING, ATLANTIC</b> <b>(CLUPEA HARENGUS)</b>	\$8,460,811	\$5,669,548	\$2,791,262	\$8,228,043	\$5,526,594	\$2,701,449
	68,839,276	44,036,770	24,802,506	63,012,930	40,922,385	22,090,545
<b>SCUP</b> <b>(STENOTOMUS CHRYSOPS)</b>	\$5,934,727	\$4,445,000	\$1,489,728	\$7,062,435	\$4,831,048	\$2,231,387
	10,752,080	8,088,755	2,663,325	12,506,967	8,517,010	3,989,957
<b>SKATES(RACK)</b> <b>(RAJIDAE)</b>	\$5,530,547	\$3,835,020	\$1,695,527	\$6,712,010	\$4,884,883	\$1,827,126
	17,211,701	11,718,811	5,492,890	17,114,941	12,056,256	5,058,685
<b>CRAB, JONAH</b> <b>(CANCER BOREALIS)</b>	\$4,359,480	\$663,423	\$3,696,057	\$3,520,400	\$530,859	\$2,989,540
	5,921,556	954,273	4,967,283	4,911,830	735,464	4,176,366

\* Sorted descending by average value over five years.

**Table 10. Number of vessels by fishing year (May through April).**

	2010			2011			2012		
	Total	Sector Vessels	Common Pool	Total	Sector Vessels	Common Pool	Total	Sector Vessels	Common Pool
<b>Total groundfish limited access eligibilities</b>	<b>1441</b>	<b>762</b>	<b>679</b>	<b>As of May 1 each Fishing Year:</b>			<b>1408</b>	<b>850</b>	<b>558</b>
<b>Eligibilities held as Confirmation of Permit History</b>	<b>94</b>	<b>22</b>	<b>72</b>	<b>168</b>	<b>88</b>	<b>80</b>	<b>228</b>	<b>145</b>	<b>83</b>
	<b>During any part of the fishing year*:</b>								
<b>Total eligible vessels</b>	1,408	765	649	1,320	781	546	1,222	728	500
<b>Eligible vessels that did not renew a limited access groundfish permit</b>	26	12	14	42	9	33	46	8	38
<b>Vessels with a limited access groundfish permit</b>	1,382	753	635	1,278	772	513	1,176	720	462
	<b>While under a limited access groundfish permit:</b>								
<b>... those with revenue from any species**</b>	857	436	421	778	445	336	760	444	318
<b>... those with allocated groundfish landings from at least one groundfish trip</b>	393	293	100	365	290	76	349	285	65
<b>... those with no landings</b>	525	317	214	500	327	177	416	276	144
<b>Percent of inactive (no landings) vessels</b>	(38%)	(42%)	(34%)	(39%)	(42%)	(35%)	(35%)	(38%)	(31%)

\* On May 1st of the fishing year the number of vessels will equal to the number of eligibilities not in Confirmation of Permit History (CPH). Over time the number of vessels will differ from the number of eligibilites because these eligibilities can be transferred from vessel to vessel during the fishing year.

These vessel counts exclude groundfish limited access eligibilities held as CPH. Starting in 2010, Amendment 16 authorized CPH holders to join sectors and to lease DAS. For purposes of comparison, CPH vessels are not included in the data for either sector or common pool.

\*\*Active vessels in this report received revenue from any species while fishing under a limited access groundfish permit



**Table 10 (continued).**

	2013			2014		
	Total	Sector Vessels	Common Pool	Total	Sector Vessels	Common Pool
<b>As of May 1 each Fishing Year:</b>						
<b>Total groundfish limited access eligibilities</b>	<b>1380</b>	<b>851</b>	<b>529</b>	<b>1371</b>	<b>845</b>	<b>526</b>
<b>Eligibilities held as Confirmation of Permit History</b>	<b>273</b>	<b>190</b>	<b>83</b>	<b>303</b>	<b>218</b>	<b>85</b>
<b>During any part of the fishing year*:</b>						
<b>Total eligible vessels</b>	1,154	688	467	1,094	642	455
<b>Eligible vessels that did not renew a limited access groundfish permit</b>	36	14	22	33	10	23
<b>Vessels with a limited access groundfish permit</b>	1,118	674	445	1,061	632	432
<b>While under a limited access groundfish permit:</b>						
<b>... those with revenue from any species**</b>	734	419	315	717	405	313
<b>... those with allocated groundfish landings from at least one groundfish trip</b>	311	231	80	273	217	56
<b>... those with no landings</b>	384	255	130	344	227	119
<b>Percent of inactive (no landings) vessels</b>	(34%)	(38%)	(29%)	(32%)	(36%)	(28%)

\* On May 1st of the fishing year the number of vessels will equal to the number of eligibilities not in Confirmation of Permit History (CPH). Over time the number of vessels will differ from the number of eligibilites because these eligibilities can be transferred from vessel to vessel during the fishing year.

These vessel counts exclude groundfish limited access eligibilities held as CPH. Starting in 2010, Amendment 16 authorized CPH holders to join sectors and to lease DAS. For purposes of comparison, CPH vessels are not included in the data for either sector or common pool.

\*\*Active vessels in this report received revenue from any species while fishing under a limited access groundfish permit

**Table 11. Number of vessels with revenue from any species (all trips) by home port state.**

Home Port State/City	Fishing Year								
	2010			2011			2012		
	Total	Sector Vessels	Common Pool	Total	Sector Vessels	Common Pool	Total	Sector Vessels	Common Pool
<b>CT</b>	12	4	8	11	4	7	10	5	5
<b>MA</b>	422	261	161	377	260	117	370	250	120
BOSTON	52	41	11	49	41	8	46	36	10
CHATHAM	43	31	12	39	28	11	38	29	9
GLOUCESTER	105	69	36	92	66	26	89	66	23
NEW BEDFORD	69	48	21	70	53	17	69	51	18
<b>ME</b>	105	64	41	92	72	21	95	76	19
PORTLAND	17	NA	NA	16	NA	NA	18	NA	NA
<b>NH</b>	50	35	15	46	33	13	41	29	12
<b>NJ</b>	56	NA	NA	49	5	44	48	10	38
<b>NY</b>	93	15	78	91	16	75	88	19	69
<b>RI</b>	86	43	43	82	44	38	77	42	35
POINT JUDITH	45	33	12	44	34	10	44	35	9
<b>Other northeast</b>	36	13	23	34	13	21	35	14	21
<b>Grand Total*</b>	<b>857</b>	<b>436</b>	<b>421</b>	<b>778</b>	<b>445</b>	<b>336</b>	<b>760</b>	<b>444</b>	<b>318</b>

\* Note: State vessel counts may exceed the grand total vessel count because vessels may change home port during the fishing year.

Table 11 (continued).

Home Port State/City	Fishing Year					
	2013			2014		
	Total	Sector Vessels	Common Pool	Total	Sector Vessels	Common Pool
CT	10	4	6	13	5	8
MA	355	235	120	346	232	114
BOSTON	47	36	11	47	39	8
CHATHAM	35	26	9	33	25	8
GLOUCESTER	83	60	23	79	57	22
NEW BEDFORD	66	50	16	65	48	17
ME	88	69	19	87	65	22
PORTLAND	17	NA	NA	17	NA	NA
NH	38	26	12	35	26	9
NJ	48	10	38	48	9	39
NY	82	20	62	81	19	62
RI	79	43	36	78	40	38
POINT JUDITH	45	34	11	44	32	12
Other northeast	37	14	23	41	15	26
<b>Grand Total*</b>	<b>734</b>	<b>419</b>	<b>315</b>	<b>717</b>	<b>405</b>	<b>313</b>

\* Note: State vessel counts may exceed the grand total vessel count because vessels may change home port during the fishing year.

**Table 12. Number of vessels with revenue from at least one groundfish trip by home port state.**

Home Port State/City	Fishing Year								
	2010			2011			2012		
	Total	Sector Vessels	Common Pool	Total	Sector Vessels	Common Pool	Total	Sector Vessels	Common Pool
<b>CT</b>	7	3	4	5	NA	NA	5	NA	NA
<b>MA</b>	237	188	49	220	186	34	206	179	27
BOSTON	35	NA	NA	34	34	0	28	28	0
CHATHAM	26	NA	NA	25	NA	NA	23	NA	NA
GLOUCESTER	74	59	15	69	55	14	61	54	7
NEW BEDFORD	33	29	4	37	32	5	36	32	4
<b>ME</b>	43	38	5	47	43	4	51	48	3
PORTLAND	15	NA	NA	15	15	0	16	16	0
<b>NH</b>	32	26	6	29	23	6	25	20	5
<b>NJ</b>	21	NA	NA	17	NA	NA	12	NA	NA
<b>NY</b>	40	8	32	42	9	33	41	11	30
<b>RI</b>	55	34	21	49	32	17	54	37	17
POINT JUDITH	31	28	3	28	NA	NA	33	NA	NA
<b>Other northeast</b>	12	5	7	9	5	4	8	NA	NA
<b>Grand total*</b>	<b>446</b>	<b>302</b>	<b>144</b>	<b>416</b>	<b>301</b>	<b>117</b>	<b>401</b>	<b>302</b>	<b>100</b>

\* Note: State vessel counts may exceed the grand total vessel count because vessels may change home port during the fishing year.

Table 12 (continued).

Home Port State/City	Fishing Year					
	2013			2014		
	Total	Sector Vessels	Common Pool	Total	Sector Vessels	Common Pool
<b>CT</b>	7	3	4	8	4	4
<b>MA</b>	176	146	30	160	140	20
BOSTON	26	NA	NA	26	26	0
CHATHAM	20	NA	NA	16	NA	NA
GLOUCESTER	53	46	7	50	43	7
NEW BEDFORD	33	28	5	35	30	5
<b>ME</b>	40	35	5	34	30	4
PORTLAND	14	14	0	14	14	0
<b>NH</b>	25	18	7	19	16	3
<b>NJ</b>	13	NA	NA	12	NA	NA
<b>NY</b>	34	8	26	27	8	19
<b>RI</b>	49	34	15	44	28	16
POINT JUDITH	30	27	3	27	22	5
<b>Other northeast</b>	6	NA	NA	6	3	3
<b>Grand total*</b>	<b>348</b>	<b>245</b>	<b>103</b>	<b>307</b>	<b>228</b>	<b>79</b>

\* Note: State vessel counts may exceed the grand total vessel count because vessels may change home port during the fishing year.

**Table 13. Number of vessels with revenue from any species by vessel size category.**

	Fishing Year								
	2010			2011			2012		
	Total	Sector Vessels	Common Pool	Total	Sector Vessels	Common Pool	Total	Sector Vessels	Common Pool
Less than 30'	65	10	55	51	6	45	49	7	42
30' to < 50'	462	224	238	404	231	176	399	230	170
50' to < 75'	218	129	89	212	132	80	207	135	73
75' and above	112	73	39	112	76	36	111	76	35
<b>Grand total</b>	<b>857</b>	<b>436</b>	<b>421</b>	<b>778</b>	<b>445</b>	<b>336</b>	<b>760</b>	<b>444</b>	<b>318</b>

**Table 14. Number of vessels with revenue from at least one groundfish trip by vessel size category.**

	Fishing Year								
	2010			2011			2012		
	Total	Sector Vessels	Common Pool	Total	Sector Vessels	Common Pool	Total	Sector Vessels	Common Pool
Less than 30'	23	154	111	18	150	87	16	151	73
30' to < 50'	242			217			207		
50' to < 75'	123	93	30	120	95	25	121	99	22
75' and above	58	55	3	61	56	5	60	55	5
<b>Grand total</b>	<b>446</b>	<b>302</b>	<b>144</b>	<b>416</b>	<b>301</b>	<b>117</b>	<b>401</b>	<b>302</b>	<b>100</b>

Table 13 (continued).

	Fishing Year					
	2013			2014		
	Total	Sector Vessels	Common Pool	Total	Sector Vessels	Common Pool
Less than 30'	51	7	44	47	5	42
30' to < 50'	383	212	171	368	205	163
50' to < 75'	193	125	68	197	121	77
75' and above	107	75	32	105	74	31
<b>Grand total</b>	<b>734</b>	<b>419</b>	<b>315</b>	<b>717</b>	<b>405</b>	<b>313</b>

Table 14 (continued).

	Fishing Year					
	2013			2014		
	Total	Sector Vessels	Common Pool	Total	Sector Vessels	Common Pool
Less than 30'	17	116	77	14	101	58
30' to < 50'	176			145		
50' to < 75'	106	83	23	103	127	21
75' and above	49	46	3	45		
<b>Grand total</b>	<b>348</b>	<b>245</b>	<b>103</b>	<b>307</b>	<b>228</b>	<b>79</b>

**Table 15. Effort by active vessels (May through April).**

	2010			2011			2012			2013			2014		
	Total	Sector	Common Pool	Total	Sector	Common Pool	Total	Sector	Common Pool	Total	Sector	Common Pool	Total	Sector	Common Pool
<b>Less than 30'</b>															
Number of groundfish trips	136	NA	NA	255	NA	NA	190	NA	NA	102	NA	NA	83	NA	NA
Number of non-groundfish trips	1,491	336	1,155	1,171	230	941	1,081	192	889	1,247	242	1,005	1,280	244	1,036
Number of days absent on groundfish trips	61	NA	NA	95	NA	NA	73	NA	NA	41	NA	NA	37	NA	NA
Number of days absent on non-groundfish trips	472	108	364	369	68	301	324	61	263	400	82	318	416	83	333
Average trip length on groundfish trips*	0.45	NA	NA	0.37	NA	NA	0.39	NA	NA	0.41	NA	NA	0.45	NA	NA
(standard deviation)	(0.13)	NA	NA	(0.12)	NA	NA	(0.14)	NA	NA	(0.20)	NA	NA	(0.24)	NA	NA
Average trip length on non-groundfish trips*	0.33	0.34	0.33	0.33	0.35	0.32	0.31	0.32	0.31	0.33	0.36	0.32	0.34	0.34	0.34
(standard deviation)	(0.14)	(0.09)	(0.15)	(0.10)	(0.10)	(0.10)	(0.11)	(0.10)	(0.11)	(0.12)	(0.14)	(0.12)	(0.13)	(0.11)	(0.13)
<b>30' to &lt;50'</b>															
Number of Groundfish Trips	9,375	7,607	1,768	11,327	9,626	1,701	10,087	8,865	1,222	6,837	5,706	1,131	6,327	5,434	893
Number of non-groundfish Trips	23,826	9,476	14,350	20,392	10,293	10,099	20,521	11,110	9,411	20,831	11,511	9,320	21,080	11,070	10,010
Number of days absent on groundfish trips	5,421	4,253	1,169	6,715	5,603	1,111	6,205	5,397	808	5,131	4,357	774	4,489	3,858	632
Number of days absent on non-groundfish trips	9,369	3,774	5,595	8,138	3,833	4,304	8,343	4,367	3,976	8,570	4,548	4,022	8,816	4,457	4,360
Average trip length on groundfish trips*	0.58	0.56	0.66	0.59	0.58	0.66	0.62	0.61	0.66	0.75	0.76	0.69	0.71	0.71	0.71
(standard deviation)	(0.66)	(0.64)	(0.73)	(0.71)	(0.72)	(0.66)	(0.74)	(0.75)	(0.66)	(0.88)	(0.93)	(0.60)	(0.87)	(0.90)	(0.69)
Average trip length on non-groundfish trips*	0.43	0.43	0.43	0.43	0.41	0.44	0.43	0.41	0.44	0.42	0.41	0.44	0.43	0.41	0.46
(standard deviation)	(0.36)	(0.34)	(0.37)	(0.36)	(0.29)	(0.41)	(0.32)	(0.26)	(0.37)	(0.32)	(0.23)	(0.40)	(0.38)	(0.25)	(0.49)



Table 15 (continued).

	2010			2011			2012			2013			2014		
	Total	Sector	Common Pool	Total	Sector	Common Pool	Total	Sector	Common Pool	Total	Sector	Common Pool	Total	Sector	Common Pool
<b>50' to &lt;75'</b>															
Number of Groundfish Trips	2,867	2,503	364	3,319	3,005	314	3,265	3,043	222	2,778	2,473	305	2,397	2,218	179
Number of non-groundfish Trips	11,075	5,554	5,521	9,924	5,079	4,845	8,964	4,715	4,249	8,704	4,998	3,706	7,726	3,915	3,811
Number of days absent on groundfish trips	6,398	6,064	334	7,553	7,273	280	6,978	6,815	163	6,003	5,774	229	5,970	5,789	181
Number of days absent on non-groundfish trips	12,905	7,252	5,653	11,776	7,120	4,655	12,201	7,426	4,775	12,482	7,993	4,489	11,543	7,101	4,442
Average trip length on groundfish trips*	2.24	2.43	0.92	2.28	2.42	0.89	2.14	2.24	0.74	2.16	2.34	0.76	2.49	2.61	1.01
(standard deviation)	(2.56)	(2.67)	(0.71)	(2.63)	(2.71)	(0.62)	(2.51)	(2.57)	(0.46)	(2.58)	(2.68)	(0.45)	(2.65)	(2.69)	(1.35)
Average trip length on non-groundfish trips*	1.18	1.31	1.04	1.20	1.42	0.97	1.37	1.58	1.14	1.45	1.61	1.23	1.51	1.83	1.18
(standard deviation)	(1.69)	(1.73)	(1.63)	(1.71)	(1.87)	(1.50)	(1.90)	(2.00)	(1.76)	(1.92)	(1.98)	(1.82)	(1.94)	(2.07)	(1.74)
<b>75' and above</b>															
Number of Groundfish Trips	1,162	1,132	30	1,168	1,150	18	1,065	1,058	7	982	979	3	1,043	NA	NA
Number of non-groundfish Trips	2,276	1,229	1,047	2,163	1,173	990	2,140	1,163	977	1,984	1,190	794	1,885	1,119	766
Number of days absent on groundfish trips	6,640	6,599	41	7,462	7,434	29	6,806	6,783	23	6,255	6,243	12	6,288	NA	NA
Number of days absent on non-groundfish trips	8,660	4,891	3,770	7,665	4,414	3,250	8,000	4,439	3,561	7,671	4,327	3,344	6,882	3,995	2,887
Average trip length on groundfish trips*	5.72	5.83	1.37	6.39	6.46	1.60	6.40	6.42	3.31	6.37	6.38	4.01	6.03	NA	NA
(standard deviation)	(2.81)	(2.73)	(2.22)	(2.86)	(2.82)	(1.25)	(2.83)	(2.82)	(2.76)	(2.57)	(2.57)	(2.37)	(2.51)	NA	NA
Average trip length on non-groundfish trips*	3.90	4.09	3.68	3.59	3.79	3.35	3.79	3.84	3.73	3.92	3.67	4.29	3.72	3.60	3.90
(standard deviation)	(3.57)	(3.52)	(3.61)	(3.26)	(3.31)	(3.18)	(3.35)	(3.32)	(3.39)	(3.15)	(3.11)	(3.17)	(3.11)	(3.05)	(3.17)

**Table 15 (continued).**

	2010			2011			2012			2013			2014		
<b>All Vessels</b>															
Number of Groundfish Trips	13,540	11,243	2,297	16,069	13,796	2,273	14,607	12,972	1,635	10,699	9,166	1,533	9,850	8,698	1,152
Number of non-groundfish Trips	38,668	16,595	22,073	33,650	16,775	16,875	32,706	17,180	15,526	32,766	17,941	14,825	31,976	16,350	15,626
Number of days absent on groundfish trips	18,521	16,916	1,605	21,825	20,317	1,508	20,062	18,997	1,065	17,431	16,378	1,053	16,784	15,937	848
Number of days absent on non-groundfish trips	31,406	16,025	15,382	27,947	15,436	12,511	28,868	16,293	12,575	29,123	16,951	12,172	27,658	15,636	12,022
Average trip length on groundfish trips*	1.37	1.51	0.70	1.36	1.47	0.67	1.37	1.46	0.65	1.63	1.79	0.69	1.70	1.83	0.74
(standard deviation)	(2.14)	(2.30)	(0.76)	(2.20)	(2.34)	(0.64)	(2.18)	(2.29)	(0.65)	(2.34)	(2.48)	(0.59)	(2.38)	(2.48)	(0.82)
Average trip length on non-groundfish trips*	0.86	1.01	0.74	0.87	0.97	0.76	0.91	0.98	0.84	0.91	0.96	0.84	0.89	0.98	0.80
(standard deviation)	(1.56)	(1.73)	(1.40)	(1.52)	(1.68)	(1.35)	(1.61)	(1.68)	(1.53)	(1.57)	(1.61)	(1.51)	(1.52)	(1.61)	(1.42)

\*This is the average trip length of all individual trips that have non-missing values for days absent. Since some trip records have missing values for days absent, average trip length reported here may be higher than what is obtained by dividing the overall number of days absent by the overall number of trips.

**Table 16. Average revenue per active vessel in 2010 dollars (May through April).\***

	2010			2011		
	Total	Sector Vessels	Common Pool	Total	Sector Vessels	Common Pool
<b>Less than 30'</b>						
Average all species revenue per vessel on groundfish trips	\$7,688	NA	NA	\$10,508	NA	NA
Number of active vessels with revenue from least one groundfish trip	23	NA	NA	18	NA	NA
(standard deviation)	(\$28,946)	NA	NA	(\$21,497)	NA	NA
Average all species revenue per vessel on non-groundfish trips	\$14,203	\$30,672	\$11,352	\$14,039	\$66,212	\$7,828
Number of active vessels taking at least one non-groundfish trip	61	9	52	47	5	42
(standard deviation)	(\$34,672)	(\$75,193)	(\$21,708)	(\$43,308)	(\$130,908)	(\$7,811)
<b>30' to &lt;50'</b>						
Average all species revenue per vessel on groundfish trips	\$111,790	\$144,779	\$55,078	\$148,466	\$182,245	\$72,842
Number of active vessels with revenue from least one groundfish trip	242	NA	NA	217	NA	NA
(standard deviation)	(\$121,126)	(\$134,585)	(\$61,226)	(\$154,062)	(\$169,923)	(\$63,993)
Average all species revenue per vessel on non-groundfish trips	\$97,151	\$90,713	\$102,522	\$100,177	\$89,009	\$113,344
Number of active vessels taking at least one non-groundfish trip	409	186	223	353	191	162
(standard deviation)	(\$128,485)	(\$110,396)	(\$141,845)	(\$123,891)	(\$103,929)	(\$143,139)
<b>50' to &lt;75'</b>						
Average all species revenue per vessel on groundfish trips	\$294,415	\$375,989	\$41,536	\$346,091	\$424,223	\$49,189
Number of active vessels with revenue from least one groundfish trip	123	93	30	120	95	25
(standard deviation)	(\$382,117)	(\$406,894)	(\$39,183)	(\$421,217)	(\$440,891)	(\$48,961)
Average all species revenue per vessel on non-groundfish trips	\$373,958	\$358,167	\$392,290	\$436,541	\$470,655	\$393,681
Number of active vessels taking at least one non-groundfish trip	188	101	87	176	98	78
(standard deviation)	(\$389,786)	(\$352,379)	(\$430,521)	(\$449,509)	(\$493,868)	(\$385,519)
<b>75' and above</b>						
Average all species revenue per vessel on groundfish trips	\$743,443	\$779,591	\$80,739	\$769,514	\$836,081	\$23,964
Number of active vessels with revenue from least one groundfish trip	58	55	3	61	56	5
(standard deviation)	(\$603,781)	(\$598,941)	(\$96,484)	(\$612,029)	(\$594,615)	(\$17,313)
Average all species revenue per vessel on non-groundfish trips	\$941,013	\$1,003,504	\$870,510	\$1,106,687	\$1,115,121	\$1,095,677
Number of active vessels taking at least one non-groundfish trip	83	44	39	83	47	36
(standard deviation)	(\$630,855)	(\$655,220)	(\$602,801)	(\$722,831)	(\$773,265)	(\$661,836)

\*Mean values should be taken in context with standard deviations, as some standard deviations are relatively high.

**Table 16 (continued).**

	2012			2013		
	Total	Sector Vessels	Common Pool	Total	Sector Vessels	Common Pool
<b>Less than 30'</b>						
Average all species revenue per vessel on groundfish trips	\$14,175	NA	NA	\$1,472	NA	NA
Number of active vessels with revenue from least one groundfish trip	16	NA	NA	17	NA	NA
(standard deviation)	(\$35,342)	NA	NA	(\$1,979)	NA	NA
Average all species revenue per vessel on non-groundfish trips	\$13,916	\$34,055	\$10,463	\$16,456	\$45,901	\$11,807
Number of active vessels taking at least one non-groundfish trip	41	6	35	44	6	38
(standard deviation)	(\$26,440)	(\$64,859)	(\$10,951)	(\$36,820)	(\$91,584)	(\$16,712)
<b>30' to &lt;50'</b>						
Average all species revenue per vessel on groundfish trips	\$120,631	\$143,127	\$61,431	\$101,044	\$128,244	\$49,764
Number of active vessels with revenue from least one groundfish trip	207	NA	NA	176	NA	NA
(standard deviation)	(\$131,682)	(\$145,130)	(\$53,131)	(\$119,726)	(\$136,049)	(\$50,486)
Average all species revenue per vessel on non-groundfish trips	\$98,042	\$97,938	\$98,164	\$106,758	\$110,862	\$102,474
Number of active vessels taking at least one non-groundfish trip	343	186	157	325	166	159
(standard deviation)	(\$112,913)	(\$110,511)	(\$116,050)	(\$129,482)	(\$113,692)	(\$144,380)
<b>50' to &lt;75'</b>						
Average all species revenue per vessel on groundfish trips	\$266,785	\$316,494	\$37,177	\$255,039	\$312,519	\$47,613
Number of active vessels with revenue from least one groundfish trip	118	97	21	106	83	23
(standard deviation)	(\$330,553)	(\$344,456)	(\$48,390)	(\$320,080)	(\$336,716)	(\$94,523)
Average all species revenue per vessel on non-groundfish trips	\$447,549	\$430,629	\$470,344	\$464,555	\$463,456	\$465,983
Number of active vessels taking at least one non-groundfish trip	169	97	72	154	87	67
(standard deviation)	(\$430,797)	(\$424,399)	(\$441,225)	(\$376,938)	(\$329,479)	(\$433,493)
<b>75' and above</b>						
Average all species revenue per vessel on groundfish trips	\$616,033	\$671,095	\$10,352	\$661,867	\$704,475	\$8,550
Number of active vessels with revenue from least one groundfish trip	60	55	5	49	46	3
(standard deviation)	(\$504,681)	(\$491,148)	(\$7,585)	(\$482,297)	(\$466,695)	(\$8,572)
Average all species revenue per vessel on non-groundfish trips	\$1,119,908	\$1,136,499	\$1,097,629	\$1,041,650	\$1,081,571	\$983,016
Number of active vessels taking at least one non-groundfish trip	82	47	35	79	47	32
(standard deviation)	(\$748,360)	(\$767,298)	(\$732,659)	(\$627,970)	(\$624,401)	(\$638,542)

\*Mean values should be taken in context with standard deviations, as some standard deviations are relatively high.

**Table 16 (continued).**

	2014		
	Total	Sector Vessels	Common Pool
<b>Less than 30'</b>			
Average all species revenue per vessel on groundfish trips	\$2,679	NA	NA
Number of active vessels with revenue from least one groundfish trip	14	NA	NA
(standard deviation)	(\$4,019)	NA	NA
Average all species revenue per vessel on non-groundfish trips	\$20,451	\$71,720	\$14,755
Number of active vessels taking at least one non-groundfish trip	40	4	36
(standard deviation)	(\$38,655)	(\$101,131)	(\$21,321)
<b>30' to &lt;50'</b>			
Average all species revenue per vessel on groundfish trips	\$124,925	\$157,890	\$52,403
Number of active vessels with revenue from least one groundfish trip	144	NA	NA
(standard deviation)	(\$130,983)	(\$143,205)	(\$47,524)
Average all species revenue per vessel on non-groundfish trips	\$132,161	\$119,413	\$145,471
Number of active vessels taking at least one non-groundfish trip	325	166	159
(standard deviation)	(\$274,086)	(\$131,333)	(\$368,359)
<b>50' to &lt;75'</b>			
Average all species revenue per vessel on groundfish trips	\$276,666	\$331,640	\$48,525
Number of active vessels with revenue from least one groundfish trip	103	NA	NA
(standard deviation)	(\$368,212)	(\$389,289)	(\$76,303)
Average all species revenue per vessel on non-groundfish trips	\$403,950	\$426,768	\$377,230
Number of active vessels taking at least one non-groundfish trip	165	89	76
(standard deviation)	(\$356,888)	(\$359,126)	(\$354,748)
<b>75' and above</b>			
Average all species revenue per vessel on groundfish trips	\$777,857	NA	NA
Number of active vessels with revenue from least one groundfish trip	45	NA	NA
(standard deviation)	(\$458,947)	NA	NA
Average all species revenue per vessel on non-groundfish trips	\$959,494	\$970,101	\$943,754
Number of active vessels taking at least one non-groundfish trip	77	46	31
(standard deviation)	(\$643,979)	(\$663,231)	(\$624,783)

\*Mean values should be taken in context with standard deviations, as some standard deviations are relatively high.

**Table 31. Stock level catch, ACE, and utilization (in live pounds).**

	2010			2011			2012		
	Allocated ACE	Sector Catch	% Caught	Allocated ACE*	Sector Catch	% Caught	Allocated ACE*	Sector Catch	% Caught
<b>GB Cod East</b>	717,441	568,396	79%	431,357	357,401	83%	350,835	145,248	41%
<b>GB Cod West</b>	6,563,099	5,591,368	85%	9,544,297	6,872,530	72%	10,542,407	3,360,755	32%
<b>GOM Cod</b>	9,540,389	8,074,864	85%	11,357,677	9,667,503	85%	9,008,557	4,798,864	53%
<b>GB Haddock East</b>	26,262,695	4,131,294	16%	21,122,576	2,343,805	11%	15,126,216	813,952	5%
<b>GB Haddock West</b>	62,331,182	14,099,687	23%	54,741,830	6,239,427	11%	51,898,296	1,825,755	4%
<b>GOM Haddock</b>	1,761,206	845,896	48%	1,871,957	1,082,645	58%	1,599,136	539,854	34%
<b>GB Yellowtail Flounder</b>	1,770,451	1,637,338	92%	2,474,662	2,194,073	89%	802,654	472,975	59%
<b>SNE/MA Yellowtail Flounder</b>	517,372	336,127	65%	941,762	895,131	95%	1,422,815	945,488	66%
<b>CC/GOM Yellowtail Flounder</b>	1,608,084	1,268,640	79%	2,169,519	1,784,518	82%	2,448,240	2,101,598	86%
<b>American Plaice</b>	6,058,149	3,354,439	55%	7,302,377	3,641,089	50%	7,771,254	3,528,709	45%
<b>Witch Flounder</b>	1,824,125	1,568,484	86%	2,847,251	2,222,414	78%	3,409,459	2,162,902	63%
<b>GB Winter Flounder</b>	4,018,496	3,081,049	77%	4,796,109	4,261,028	89%	7,752,484	4,255,861	55%
<b>GOM Winter Flounder</b>	293,736	186,173	63%	716,989	351,572	49%	1,590,301	568,983	36%
<b>SNE Winter Flounder</b>	Not allocated			Not allocated			Not allocated		
<b>Redfish</b>	14,894,618	4,714,287	32%	18,034,606	6,051,128	34%	19,933,122	9,749,830	49%
<b>White Hake</b>	5,522,677	4,772,392	86%	7,038,744	6,716,028	95%	7,527,513	5,395,933	72%
<b>Atlantic Pollock</b>	35,666,741	12,191,941	34%	34,096,310	16,780,932	49%	30,670,586	14,076,674	46%
<b>Grand Total</b>	<b>179,350,461</b>	<b>66,422,374</b>	<b>37%</b>	<b>179,488,022</b>	<b>71,461,222</b>	<b>40%</b>	<b>171,853,874</b>	<b>54,743,382</b>	<b>32%</b>

\*includes sector carryover

Table 31 (continued).

	2013			2014		
	Allocated ACE*	Sector Catch	% Caught	Allocated ACE*	Sector Catch	% Caught
GB Cod East	199,323	73,459	37%	320,123	151,368	47%
GB Cod West	4,701,626	3,323,468	71%	3,711,239	2,856,404	77%
GOM Cod	1,932,992	1,615,568	84%	1,942,256	1,437,777	74%
GB Haddock East	8,249,384	1,276,536	15%	20,842,612	3,386,831	16%
GB Haddock West	55,258,304	5,288,431	10%	18,772,964	8,624,525	46%
GOM Haddock	549,399	373,085	68%	990,991	713,799	72%
GB Yellowtail Flounder	336,532	123,104	37%	552,370	137,592	25%
SNE/MA Yellowtail Flounder	1,203,211	625,893	52%	1,095,796	690,002	63%
CC/GOM Yellowtail Flounder	1,245,861	831,500	67%	1,075,295	549,905	51%
American Plaice	3,770,930	3,068,869	81%	3,150,797	2,850,238	90%
Witch Flounder	1,334,433	1,409,638	106%	1,243,365	1,133,561	91%
GB Winter Flounder	8,457,042	3,796,424	45%	7,630,035	2,533,799	33%
GOM Winter Flounder	1,666,653	371,170	22%	1,589,113	272,701	17%
SNE Winter Flounder	2,367,913	1,478,114	62%	2,483,822	1,080,050	43%
Redfish	24,061,116	8,826,334	37%	24,420,602	10,321,747	42%
White Hake	9,130,471	4,508,966	49%	9,861,419	3,836,345	39%
Atlantic Pollock	30,933,579	10,763,116	35%	30,498,028	8,755,825	29%
<b>Grand Total</b>	<b>155,398,769</b>	<b>47,753,673</b>	<b>31%</b>	<b>130,180,828</b>	<b>49,332,471</b>	<b>38%</b>

\*includes sector carryover

**Table 34. Distribution of revenue from all species (all trips) among vessels<sup>40</sup>.**

Percentage Bracket	Year								
	2010			2011			2012		
	Total	Sector Vessels	Common Pool	Total	Sector Vessels	Common Pool	Total	Sector Vessels	Common Pool
<b>Top 1%</b>	\$20,938,368 (7.1%)	\$12,385,515 (6.3%)	\$10,273,851 (10.5%)	\$20,850,040 (6.4%)	\$13,839,985 (6.0%)	\$8,755,004 (9.2%)	\$20,501,375 (6.9%)	\$13,372,223 (6.6%)	\$9,017,373 (9.7%)
<b>20%</b>	\$169,855,449 (57.5%)	\$100,600,266 (50.9%)	\$57,705,485 (58.8%)	\$184,993,733 (56.8%)	\$116,790,793 (50.8%)	\$57,869,370 (60.6%)	\$166,099,641 (56.2%)	\$101,975,702 (50.3%)	\$57,671,014 (62.2%)
<b>40%</b>	\$60,505,864 (20.5%)	\$47,125,887 (23.9%)	\$18,153,319 (18.5%)	\$70,144,933 (21.5%)	\$56,878,216 (24.7%)	\$17,687,569 (18.5%)	\$63,489,427 (21.5%)	\$48,949,196 (24.2%)	\$16,005,045 (17.3%)
<b>60%</b>	\$29,519,098 (10.0%)	\$22,301,782 (11.3%)	\$9,262,719 (9.4%)	\$32,581,540 (10.0%)	\$25,518,156 (11.1%)	\$8,185,112 (8.6%)	\$29,294,361 (9.9%)	\$22,331,310 (11.0%)	\$7,343,317 (7.9%)
<b>80%</b>	\$13,360,237 (4.5%)	\$11,777,461 (6.0%)	\$2,420,435 (2.5%)	\$14,581,023 (4.5%)	\$13,085,656 (5.7%)	\$2,673,783 (2.8%)	\$13,590,254 (4.6%)	\$12,169,360 (6.0%)	\$2,426,137 (2.6%)
<b>99%</b>	\$1,391,493 (.5%)	\$3,289,327 (1.7%)	\$274,224 (.3%)	\$2,433,774 (.7%)	\$3,988,445 (1.7%)	\$312,661 (.3%)	\$2,331,014 (.8%)	\$3,746,876 (1.8%)	\$297,387 (.3%)
<b>Bottom 1%</b>	\$1,667 (.0%)	\$1,106 (.0%)	\$800 (.0%)	\$1,176 (.0%)	\$800 (.0%)	\$670 (.0%)	\$994 (.0%)	\$1,788 (.0%)	\$338 (.0%)
<b>Grand Total</b>	\$295,572,176	\$197,481,344	\$98,090,832	\$325,586,218	\$230,102,050	\$95,484,167	\$295,307,067	\$202,546,456	\$92,760,611
<b>Number of Vessels</b>	857	436	421	778	445	336	760	444	318

<sup>40</sup> In Table 34, each category presents the incremental difference in cumulative all species revenue from the previous category. For example, in Table 34, by adding the all species revenues presented for the "Top 1%" and "Top 20%" categories in 2010, one can obtain the total all species revenues earned by the top 20% of vessels (\$190,793,817), \$20,938,368 of which was earned by the top 1% of vessels.



Table 34 (continued).

Percentage Bracket	2013			2014		
	Total	Sector Vessels	Common Pool	Total	Sector Vessels	Common Pool
<b>Top 1%</b>	\$17,749,077 (6.7%)	\$11,508,591 (6.3%)	\$8,086,609 (9.7%)	\$22,038,251 (8.3%)	\$12,651,280 (7.0%)	\$11,233,103 (13.2%)
<b>20%</b>	\$149,458,738 (56.1%)	\$91,004,598 (49.7%)	\$52,202,134 (62.4%)	\$139,139,282 (52.3%)	\$85,478,520 (47.2%)	\$47,228,250 (55.4%)
<b>40%</b>	\$61,475,240 (23.1%)	\$46,341,577 (25.3%)	\$15,000,458 (17.9%)	\$62,342,198 (23.4%)	\$45,862,148 (25.3%)	\$16,222,175 (19.0%)
<b>60%</b>	\$25,812,564 (9.7%)	\$21,646,139 (11.8%)	\$6,442,569 (7.7%)	\$28,371,453 (10.7%)	\$23,096,766 (12.8%)	\$8,031,581 (9.4%)
<b>80%</b>	\$10,365,886 (3.9%)	\$9,601,387 (5.2%)	\$1,699,841 (2.0%)	\$12,414,160 (4.7%)	\$10,599,713 (5.9%)	\$2,332,872 (2.7%)
<b>99%</b>	\$1,665,103 (.6%)	\$2,823,713 (1.5%)	\$163,190 (.2%)	\$1,987,281 (.7%)	\$3,346,804 (1.8%)	\$205,623 (.2%)
<b>Bottom 1%</b>	\$847 (.0%)	\$6,411 (.0%)	\$237 (.0%)	\$809 (.0%)	\$4,405 (.0%)	\$195 (.0%)
<b>Grand Total</b>	\$266,527,454	\$182,932,415	\$83,595,039	\$266,293,434	\$181,039,636	\$85,253,798
<b>Number of Vessels</b>	734	419	315	717	405	313

**Table 35. Distribution of revenue from groundfish (all trips) among vessels<sup>41</sup>.**

Percentage Bracket	2010			2011			2012		
	Total	Sector Vessels	Common Pool	Total	Sector Vessels	Common Pool	Total	Sector Vessels	Common Pool
<b>Top 1%</b>	\$9,951,334 (11.9%)	\$8,368,455 (10.3%)	NA NA	\$9,035,940 (10.2%)	\$7,540,489 (8.6%)	NA NA	\$5,645,854 (8.3%)	\$5,645,854 (8.4%)	NA NA
<b>20%</b>	\$53,563,154 (64.3%)	\$45,995,466 (56.6%)	\$1,382,629 (67.0%)	\$58,535,516 (65.9%)	\$50,934,654 (57.9%)	\$455,556 (54.2%)	\$45,882,044 (67.7%)	\$40,675,401 (60.6%)	\$383,501 (64.1%)
<b>40%</b>	\$14,627,355 (17.5%)	\$16,966,934 (20.9%)	\$126,718 (6.1%)	\$15,386,599 (17.3%)	\$18,198,809 (20.7%)	\$87,046 (10.4%)	\$12,197,362 (18.0%)	\$13,380,530 (19.9%)	\$52,004 (8.7%)
<b>60%</b>	\$4,577,038 (5.5%)	\$7,035,367 (8.7%)	\$28,168 (1.4%)	\$5,037,333 (5.7%)	\$7,892,560 (9.0%)	\$19,129 (2.3%)	\$3,468,969 (5.1%)	\$5,608,318 (8.4%)	\$18,568 (3.1%)
<b>80%</b>	\$608,137 (.7%)	\$2,610,251 (3.2%)	\$6,417 (.3%)	\$856,120 (1.0%)	\$2,993,798 (3.4%)	\$3,385 (.4%)	\$519,529 (.8%)	\$1,690,766 (2.5%)	\$6,087 (1.0%)
<b>99%</b>	\$22,281 (.0%)	\$310,308 (.4%)	NA NA	\$25,253 (.0%)	\$476,537 (.5%)	NA NA	\$21,574 (.0%)	\$136,096 (.2%)	NA NA
<b>Bottom 1%</b>	\$7 (.0%)	\$41 (.0%)	NA NA	\$7 (.0%)	\$20 (.0%)	NA NA	\$7 (.0%)	\$18 (.0%)	NA NA
<b>Grand Total</b>	\$83,349,307	\$81,286,822	\$2,062,485	\$88,876,767	\$88,036,868	\$839,899	\$67,735,338	\$67,136,982	\$598,356
<b>Number of Vessels</b>	435	307	128	407	302	106	397	306	92

<sup>41</sup> In Table 35, each category presents the incremental difference in cumulative groundfish revenue from the previous category. For example, in Table 35, by adding the groundfish revenues presented for the "Top 1%" and "Top 20%" categories in 2010, one can obtain the total groundfish revenues earned by the top 20% of vessels (\$63,514,489), \$9,951,334 of which was earned by the top 1% of vessels.

Table 35 (continued).

Percentage Bracket	2013			2014		
	Total	Sector Vessels	Common Pool	Total	Sector Vessels	Common Pool
<b>Top 1%</b>	\$5,730,026 (10.4%)	\$4,379,814 (8.1%)	NA NA	\$6,730,005 (12.1%)	\$5,233,164 (9.6%)	NA NA
<b>20%</b>	\$38,544,133 (69.9%)	\$33,162,000 (61.2%)	\$498,020 (51.1%)	\$36,566,656 (65.8%)	\$32,383,360 (59.2%)	\$549,495 (66.1%)
<b>40%</b>	\$8,556,301 (15.5%)	\$11,591,690 (21.4%)	\$67,215 (6.9%)	\$9,124,174 (16.4%)	\$12,043,374 (22.0%)	\$85,925 (10.3%)
<b>60%</b>	\$2,078,854 (3.8%)	\$3,749,530 (6.9%)	\$11,995 (1.2%)	\$2,667,878 (4.8%)	\$3,542,516 (6.5%)	\$10,118 (1.2%)
<b>80%</b>	\$201,571 (.4%)	\$1,199,902 (2.2%)	\$3,011 (.3%)	\$431,914 (.8%)	\$1,378,885 (2.5%)	\$2,467 (.3%)
<b>99%</b>	\$6,868 (.0%)	\$61,143 (.1%)	NA NA	\$12,872 (.0%)	\$121,486 (.2%)	NA NA
<b>Bottom 1%</b>	\$6 (.0%)	\$17 (.0%)	NA NA	\$14 (.0%)	\$28 (.0%)	NA NA
<b>Grand Total</b>	\$55,117,761	\$54,144,096	\$973,665	\$55,533,512	\$54,702,812	\$830,701
<b>Number of Vessels</b>	359	251	108	305	230	75

**Table 38b. Number of vessels with revenue from all species (on all trips) by cumulative quartiles (ordered high revenue to low).**

Percent of all species revenue	2010	2011	2012	2013	2014
<b>Top 25%</b>	40 (4.7%)	41 (5.3%)	39 (5.1%)	39 (5.3%)	37 (5.2%)
<b>Top 50%</b>	109 (12.7%)	107 (13.8%)	103 (13.6%)	101 (13.8%)	105 (14.6%)
<b>Top 75%</b>	241 (28.1%)	223 (28.7%)	217 (28.6%)	209 (28.5%)	219 (30.5%)
<b>100%</b>	857 (100.0%)	778 (100.0%)	760 (100.0%)	734 (100.0%)	717 (100.0%)

**Table 39b. Number of vessels with revenue from groundfish (on all trips) by cumulative quartiles (ordered high revenue to low).**

Percent of groundfish revenue	2010	2011	2012	2013	2014
<b>Top 25%</b>	14 (3.2%)	15 (3.7%)	14 (3.5%)	11 (3.1%)	10 (3.3%)
<b>Top 50%</b>	39 (9.0%)	39 (9.6%)	37 (9.3%)	30 (8.4%)	27 (8.9%)
<b>Top 75%</b>	84 (19.3%)	80 (19.7%)	78 (19.6%)	62 (17.3%)	57 (18.7%)
<b>100%</b>	435 (100.0%)	407 (100.0%)	397 (100.0%)	359 (100.0%)	305 (100.0%)

**Table 40. Changes in employment indicators by vessel size category  
(May through April, all trips).**

Vessel Size	Year				
	2010	2011	2012	2013	2014
<b>Less than &lt; 30'</b>					
Total CREW POSITIONS	93	78	75	71	66
Total CREW-TRIPS	2,674	2,460	2,163	2,117	2,166
Total CREW-DAYS	911	823	718	726	752
Crew-days/Crew-trips	0.34	0.33	0.33	0.34	0.35
<b>30' to &lt; 50'</b>					
Total CREW POSITIONS	966	884	875	832	799
Total CREW-TRIPS	69,405	68,793	66,970	59,270	58,900
Total CREW-DAYS	33,372	35,001	34,628	32,164	31,376
Crew-days/Crew-trips	0.48	0.51	0.52	0.54	0.53
<b>50' to &lt; 75'</b>					
Total CREW POSITIONS	683	673	669	630	642
Total CREW-TRIPS	38,085	37,316	34,989	32,902	28,939
Total CREW-DAYS	65,509	65,417	66,899	62,918	59,481
Crew-days/Crew-trips	1.72	1.75	1.91	1.91	2.06
<b>75' and above</b>					
Total CREW POSITIONS	529	541	522	507	503
Total CREW-TRIPS	14,287	13,880	13,106	12,680	12,558
Total CREW-DAYS	70,726	69,394	66,684	62,182	59,145
Crew-days/Crew-trips	4.95	5.00	5.09	4.90	4.71
<b>All Sizes</b>					
Total CREW POSITIONS	2,270	2,176	2,141	2,040	2,010
Total CREW-TRIPS	124,451	122,449	117,228	106,969	102,563
Total CREW-DAYS	170,519	170,635	168,930	157,990	150,753
Crew-days/Crew-trips	1.37	1.39	1.44	1.48	1.47

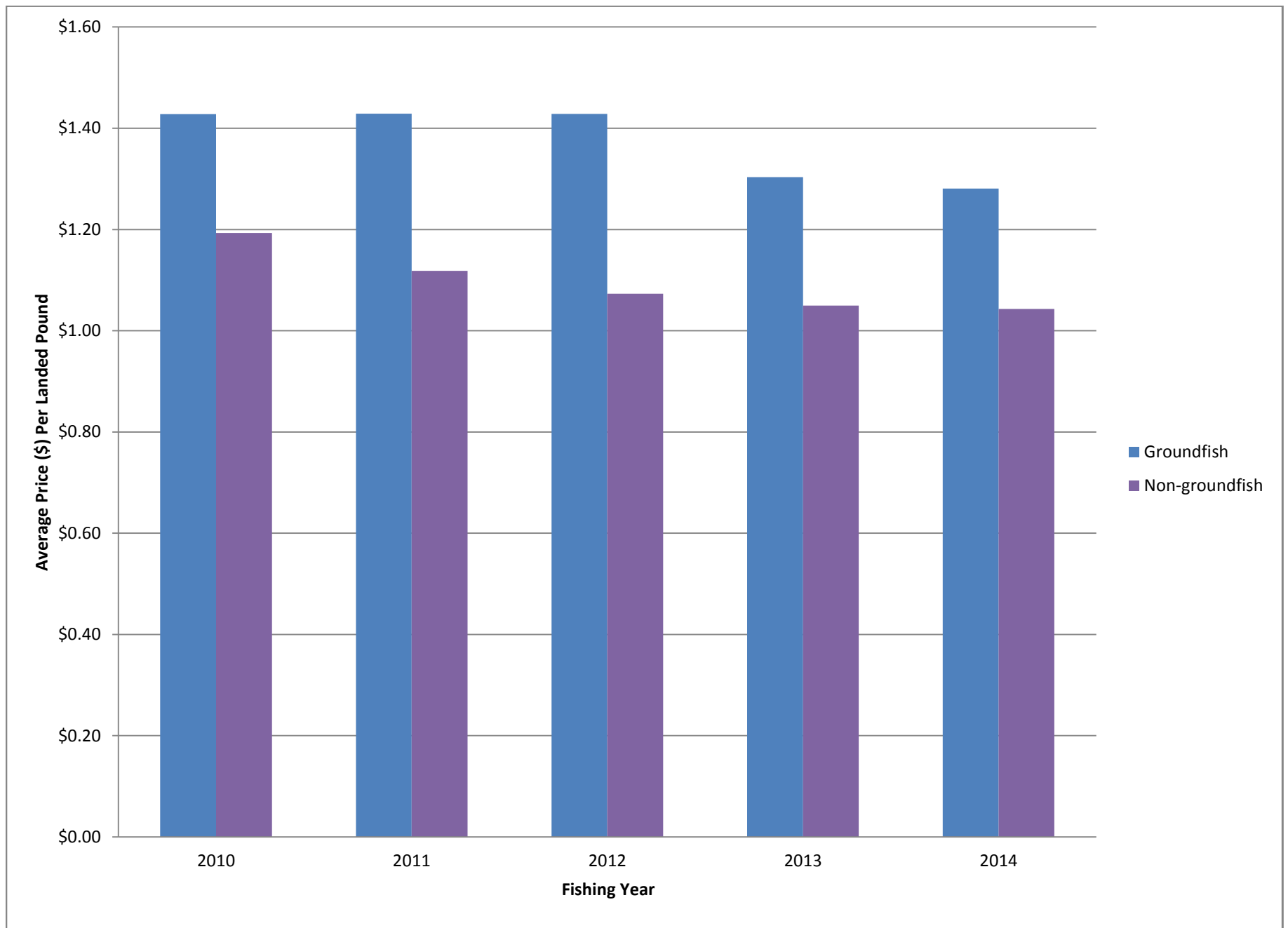
**Table 41. Changes in employment indicators by home port state (May through April, all trips).**

Home Port State	2010	2011	Year 2012	2013	2014
<b>CT</b>					
Total CREW POSITIONS	38	40	39	39	46
Total CREW-TRIPS	2,033	1,497	1,582	1,324	1,630
Total CREW-DAYS	4,018	3,009	4,478	3,583	2,938
Crew-days/Crew-trips	1.98	2.01	2.83	2.71	1.80
<b>MA</b>					
Total CREW POSITIONS	1,133	1,065	1,044	984	974
Total CREW-TRIPS	53,520	54,239	51,642	44,413	42,887
Total CREW-DAYS	82,462	85,262	81,588	73,575	73,598
Crew-days/Crew-trips	1.54	1.57	1.58	1.66	1.72
<b>ME</b>					
Total CREW POSITIONS	251	228	243	223	216
Total CREW-TRIPS	16,538	13,965	14,558	13,172	13,741
Total CREW-DAYS	15,566	14,861	16,496	15,286	14,255
Crew-days/Crew-trips	0.94	1.06	1.13	1.16	1.04
<b>NH</b>					
Total CREW POSITIONS	107	106	96	87	77
Total CREW-TRIPS	8,035	8,423	7,998	5,940	5,959
Total CREW-DAYS	3,889	4,914	5,141	4,493	3,985
Crew-days/Crew-trips	0.48	0.58	0.64	0.76	0.67

Table 41 (continued).

Home Port State	2010	2011	Year 2012	2013	2014
<b>NJ</b>					
Total CREW POSITIONS	149	145	149	153	149
Total CREW-TRIPS	9,969	9,533	8,109	7,706	7,230
Total CREW-DAYS	10,077	9,890	10,322	9,670	9,268
Crew-days/Crew-trips	1.01	1.04	1.27	1.25	1.28
<b>NY</b>					
Total CREW POSITIONS	209	217	209	194	193
Total CREW-TRIPS	14,728	14,927	14,186	13,174	12,964
Total CREW-DAYS	15,812	16,038	15,011	14,555	14,208
Crew-days/Crew-trips	1.07	1.07	1.06	1.10	1.10
<b>RI</b>					
Total CREW POSITIONS	253	246	232	226	225
Total CREW-TRIPS	15,248	15,522	15,024	17,000	14,196
Total CREW-DAYS	26,806	25,068	24,257	25,637	22,953
Crew-days/Crew-trips	1.76	1.61	1.61	1.51	1.62
<b>OTHER NORTHEAST</b>					
Total CREW POSITIONS	130	128	128	134	130
Total CREW-TRIPS	4,380	4,343	4,129	4,240	3,956
Total CREW-DAYS	11,888	11,594	11,635	11,191	9,547
Crew-days/Crew-trips	2.71	2.67	2.82	2.64	2.41
<b>Total*</b>					
Total CREW POSITIONS	2,270	2,176	2,141	2,040	2,010
Total CREW-TRIPS	124,451	122,449	117,228	106,969	102,563
Total CREW-DAYS	170,519	170,635	168,930	157,990	150,753
Crew-days/Crew-trips	1.37	1.39	1.44	1.48	1.47

\*Note vessels may change home ports during the year resulting in associated crew positions for more than one state. This means the total positions shown here are higher than the total positions as calculated at the permit level. The total work opportunity associated with these positions, crew trips, and crew-days totals, is the same as reported at the permit level.



**Figure 1. Yearly average price (in 2010 dollars) of combined groundfish vs. other species**



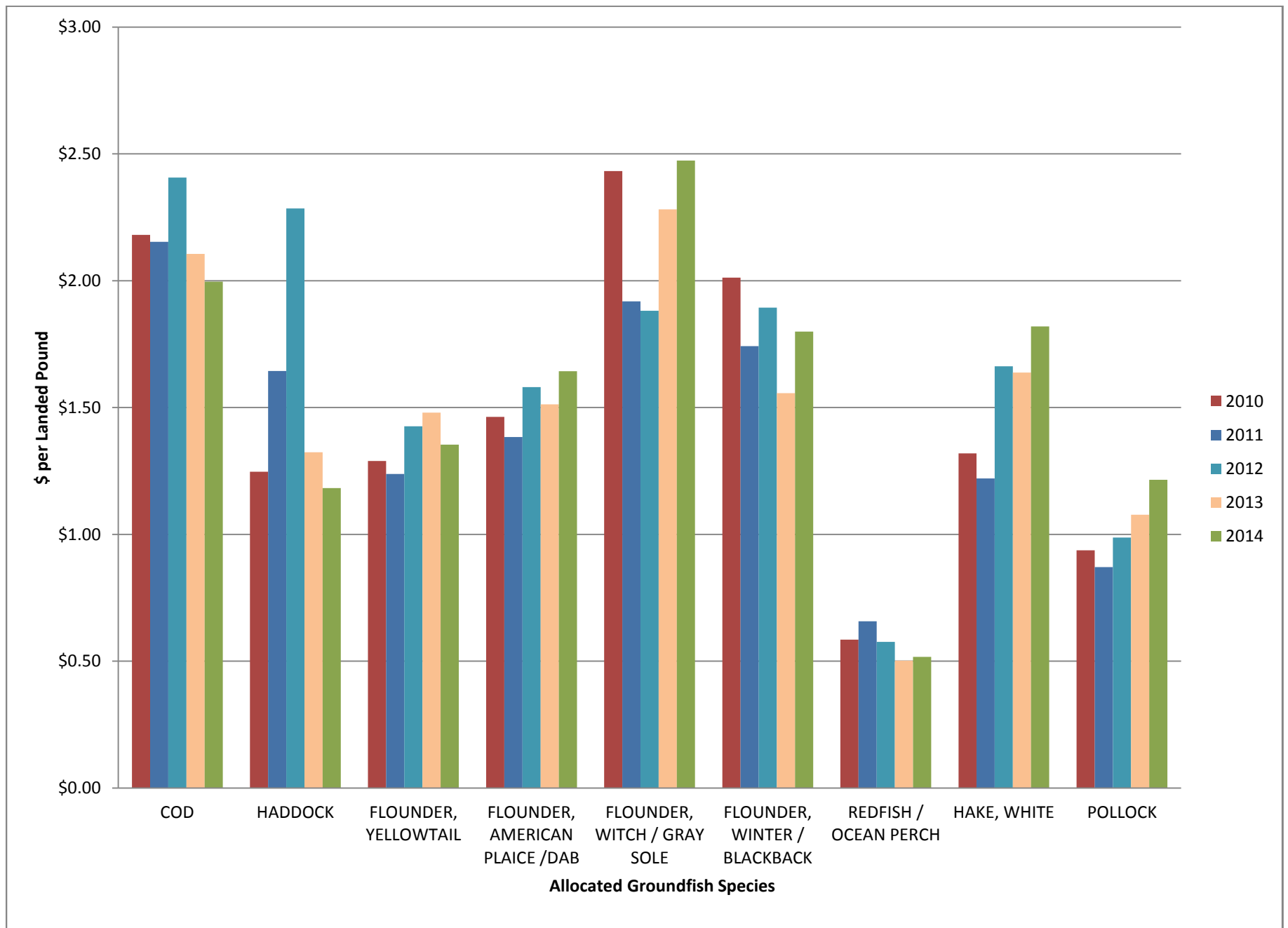


Figure 2. Yearly average price (in 2010 dollars) by allocated groundfish species.